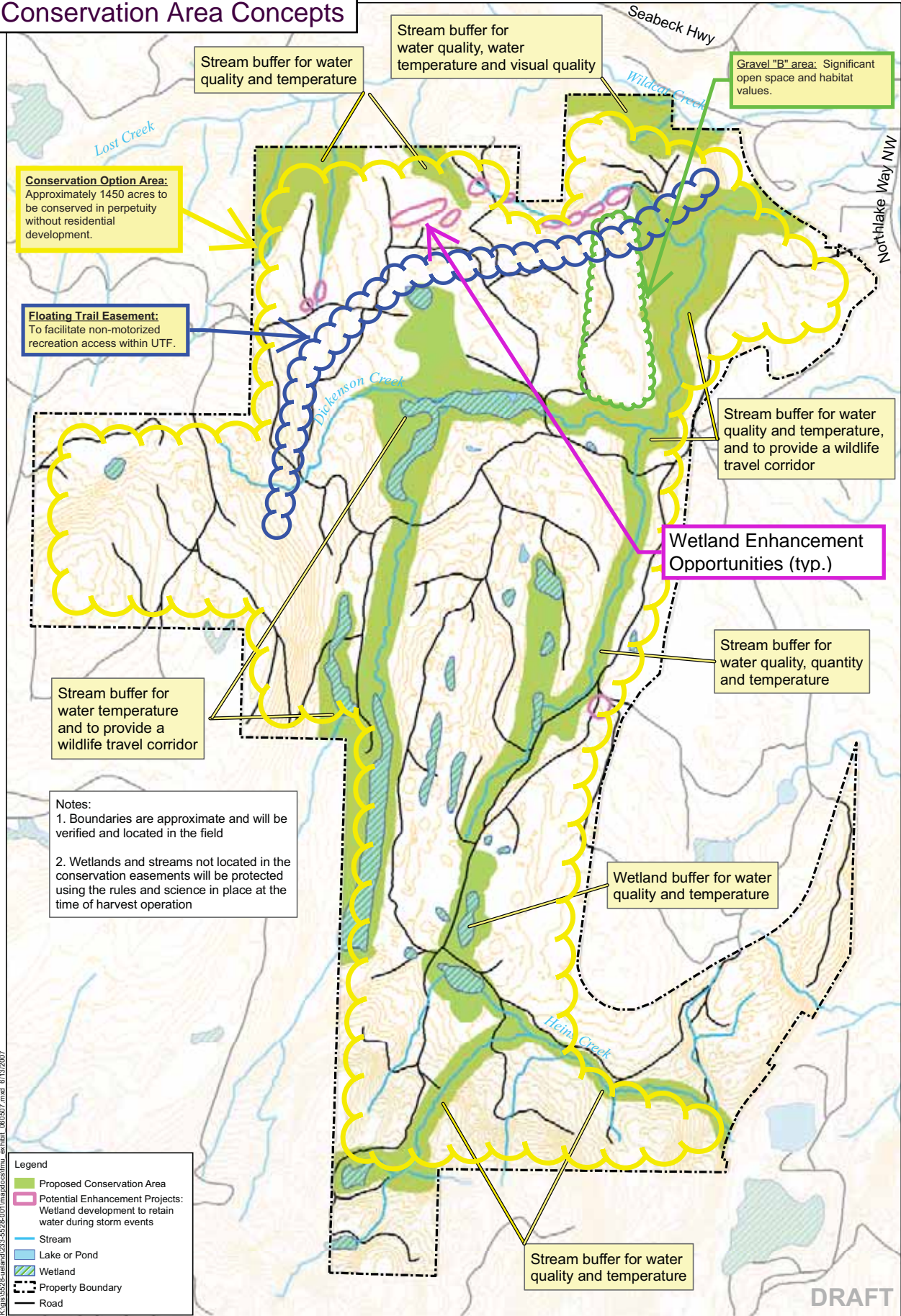


Appendix "A" - 1 of 2 Conservation Area Concepts



Conservation Option Area:
Approximately 1450 acres to be conserved in perpetuity without residential development.

Floating Trail Easement:
To facilitate non-motorized recreation access within UTF.

Stream buffer for water quality, water temperature and visual quality

Gravel "B" area: Significant open space and habitat values.

Stream buffer for water quality and temperature, and to provide a wildlife travel corridor

Wetland Enhancement Opportunities (typ.)

Stream buffer for water quality, quantity and temperature

Stream buffer for water temperature and to provide a wildlife travel corridor

Notes:
1. Boundaries are approximate and will be verified and located in the field
2. Wetlands and streams not located in the conservation easements will be protected using the rules and science in place at the time of harvest operation

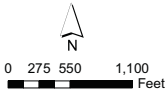
Wetland buffer for water quality and temperature

Stream buffer for water quality and temperature

Legend

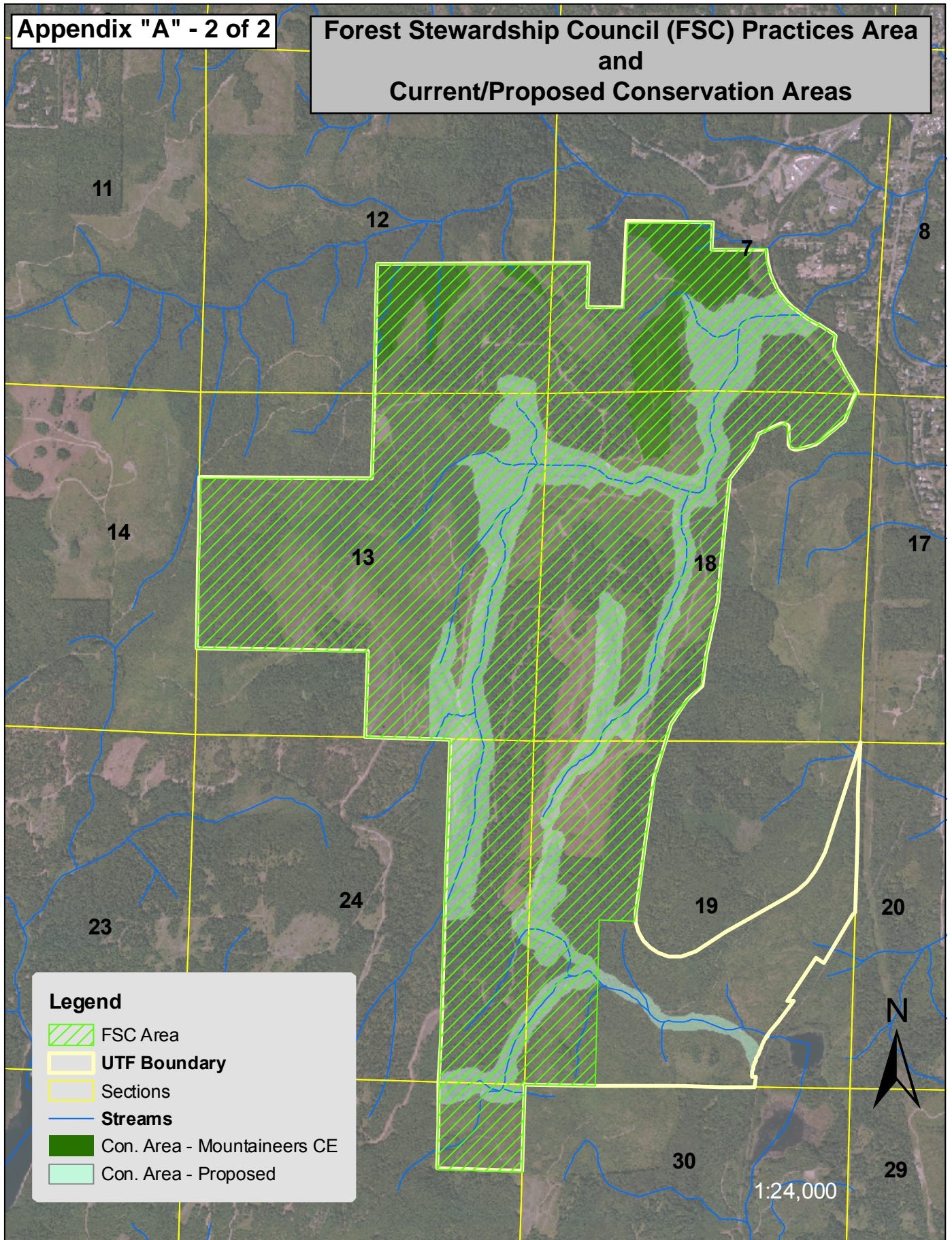
- Proposed Conservation Area
- Potential Enhancement Projects: Wetland development to retain water during storm events
- Stream
- Lake or Pond
- Wetland
- Property Boundary
- Road

K:\0419528-ueland\233-5228-001\mapdocs\lmu_exhibit_060907.mxd 6/19/2007

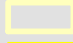

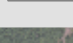


DRAFT

Forest Stewardship Council (FSC) Practices Area
and
Current/Proposed Conservation Areas



Legend

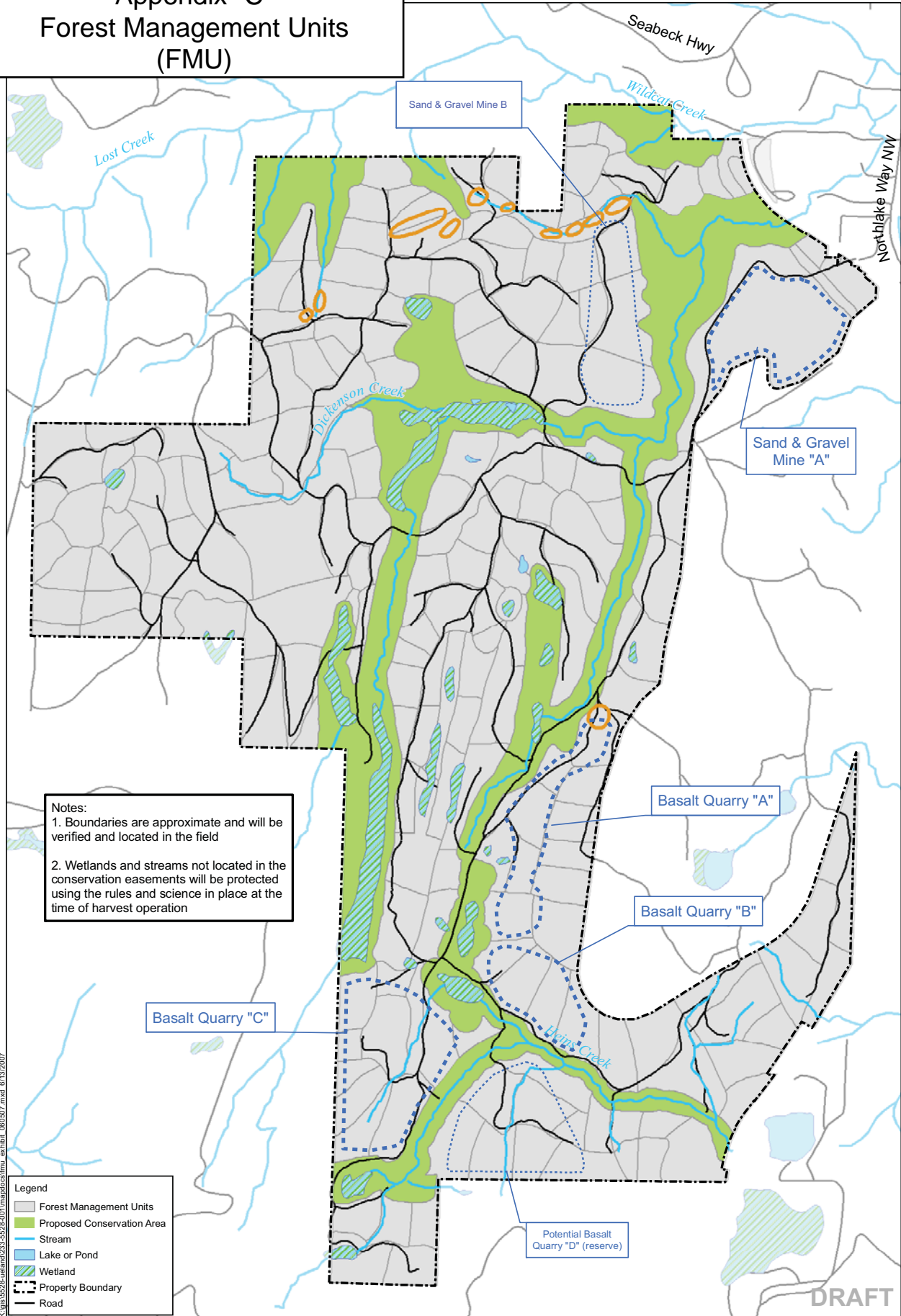
-  FSC Area
-  UTF Boundary
-  Sections
-  Streams
-  Con. Area - Mountaineers CE
-  Con. Area - Proposed

1:24,000

Ueland Tree Farm Tax Parcels - Entire Parcels.	Mineral - all or portions of parcel
072401-3-002-2002	
072401-3-003-2001	
072401-3-005-2009	
072401-3-006-2008	
072401-3-007-2007	*
072401-3-008-2006	*
072401-4-048-2006	
072401-4-104-2007	*
072401-4-105-2006	*
072401-4-131-2004	
072401-4-132-2003	
122401-4-006-1001	
122401-4-007-1000	
122401-4-008-1009	
122401-4-009-1008	
122401-4-012-1003	
122401-4-013-1002	
132401-1-002-1000	
132401-1-003-1009	
132401-1-004-1008	
132401-1-005-1007	
132401-1-006-1006	
132401-1-007-1005	
132401-1-008-1004	
132401-1-009-1003	
132401-2-002-1008	
132401-2-003-1007	
132401-2-004-1006	
132401-2-005-1005	
132401-3-001-1007	
132401-3-002-1006	
132401-3-003-1005	
132401-3-004-1004	
132401-4-001-1005	
132401-4-002-1004	
132401-4-003-1003	
132401-4-004-1002	
132401-4-005-1001	
132401-4-006-1000	
132401-4-007-1009	
132401-4-008-1008	
182401-1-013-2000	*
182401-1-014-2009	*
182401-1-015-2008	*
182401-2-001-2002	*

182401-2-002-2001	*
182401-2-004-2009	*
182401-2-005-2008	*
182401-2-006-2007	
182401-2-007-2006	*
182401-2-008-2005	*
182401-3-001-2000	*
182401-3-002-2009	*
182401-3-003-2008	
182401-3-004-2007	
182401-3-005-2006	
182401-3-006-2005	
182401-3-009-2002	*
182401-3-010-2009	*
182401-3-010-2009	
192401-2-002-2000	*
192401-2-003-2009	
192401-2-004-2008	*
192401-2-005-2007	*
192401-2-006-2006	*
192401-2-011-2009	*
192401-2-011-2108	
192401-3-004-2006	*
192401-3-005-2005	*
192401-3-006-2004	
192401-3-007-2003	
242401-1-005-1004	
242401-1-006-1003	
242401-1-007-1002	
242401-1-008-1001	*
242401-4-005-1008	*
242401-4-006-1007	*
242401-4-007-1006	*
242401-4-008-1005	*
252401-1-003-1005	
252401-1-004-1004	

Appendix "C" Forest Management Units (FMU)

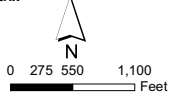


Notes:
 1. Boundaries are approximate and will be verified and located in the field
 2. Wetlands and streams not located in the conservation easements will be protected using the rules and science in place at the time of harvest operation

K:\p\5528\ueland\233-5528-001\mapdoc\fm_u. exhaib. 06/07.mxd 6/13/2007

Legend

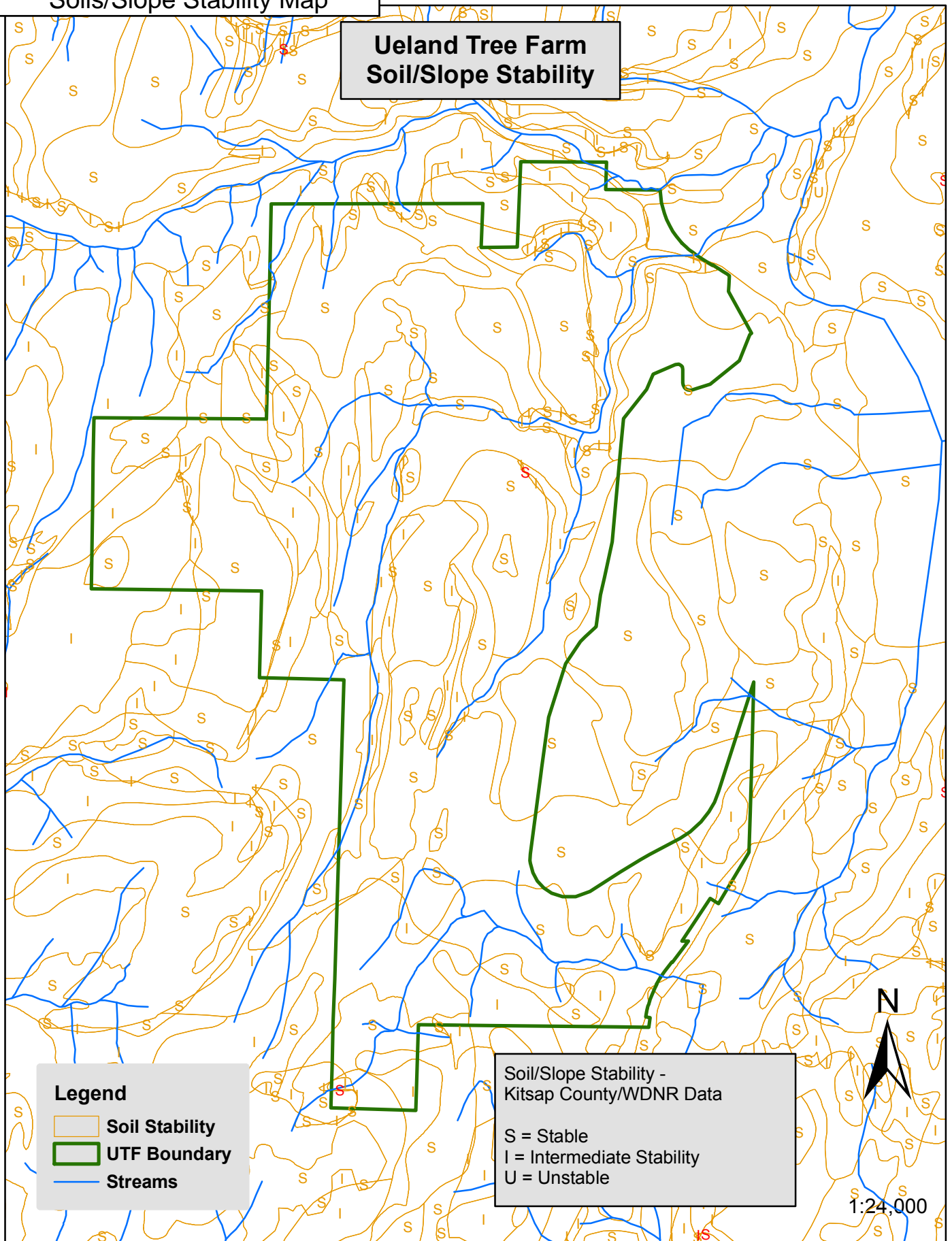
- Forest Management Units
- Proposed Conservation Area
- Stream
- Lake or Pond
- Wetland
- Property Boundary
- Road



DRAFT

Appendix "D"
Soils/Slope Stability Map

**Ueland Tree Farm
Soil/Slope Stability**



Legend

- Soil Stability
- UTF Boundary
- Streams

Soil/Slope Stability -
Kitsap County/WDNR Data

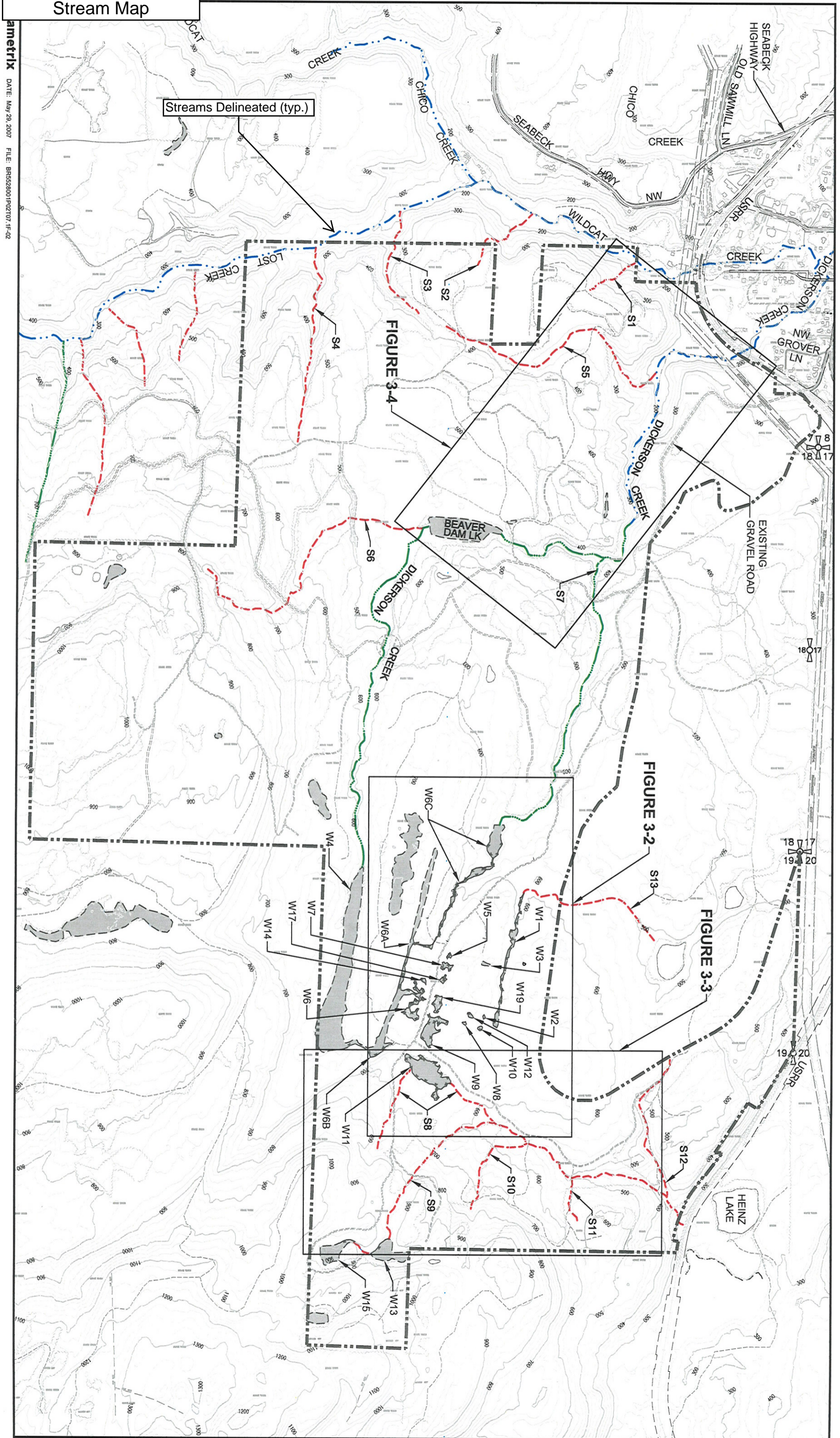
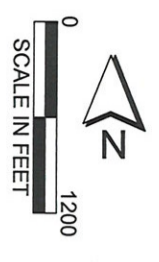
- S = Stable
- I = Intermediate Stability
- U = Unstable

N

1:24,000

Appendix "E"
Stream Map

ametrrix DATE: May 29, 2007 FILE: BR558001R02T07_1F-A2



Streams Delineated (typ.)

FIGURE 3-4

FIGURE 3-2

FIGURE 3-3

LEGEND:

- DELINEATED WETLANDS
- ESTIMATED / NWI WETLANDS
- PROPERTY BOUNDARY
- GRAVEL ROAD
- SERVICE ROAD
- STREAM TYPE F
- STREAM TYPE NP
- STREAM TYPE NS (INTERMITTENT)
- W2 WETLAND NUMBER
- S7 STREAM NUMBER

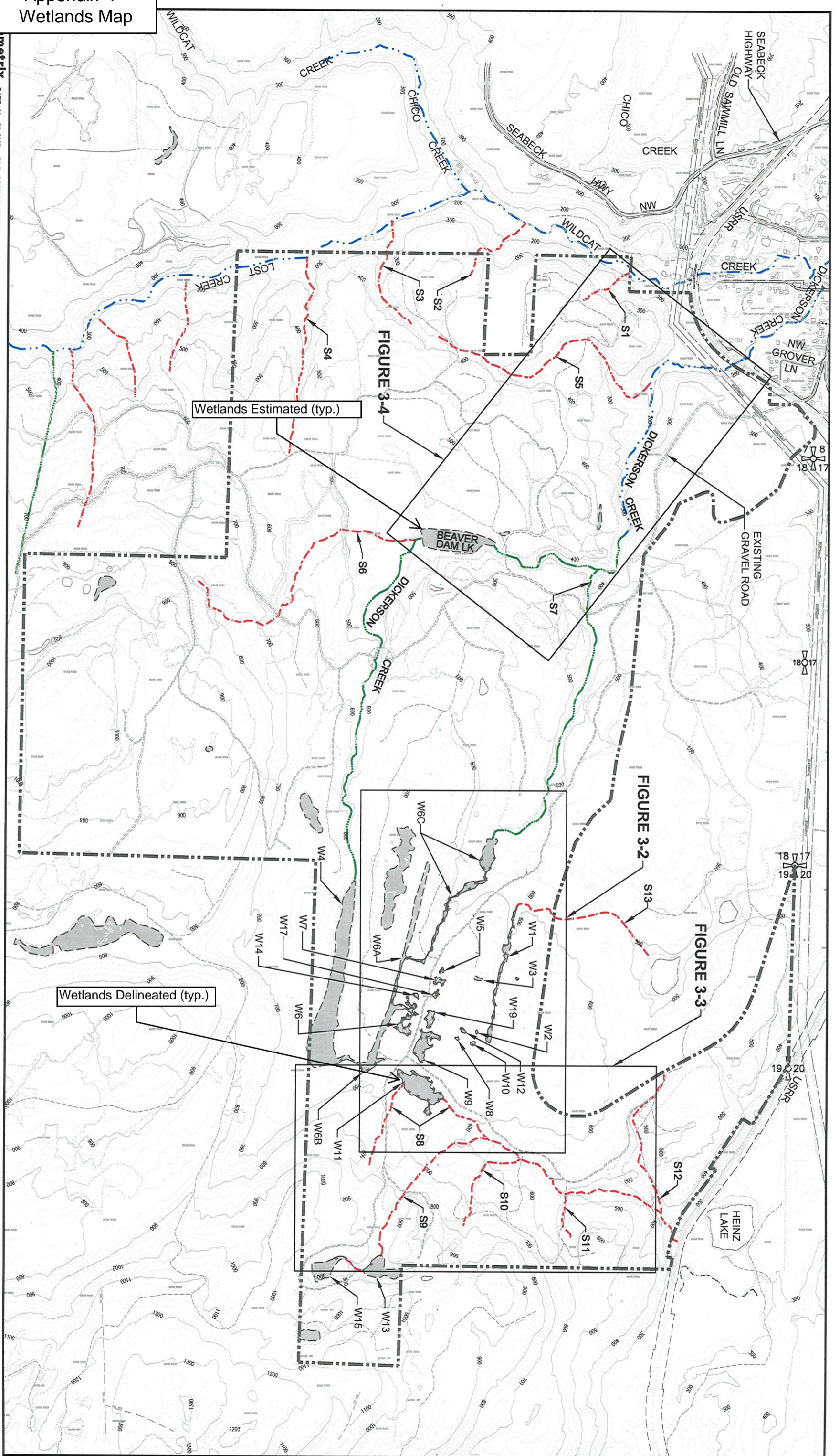
Figure 3-1
Ueland Tree Farm
Site Map

Appendix "F"
Wetlands Map

metrix DATE: May 29, 2007 FILE: BR558001R02T07_1F-02



- LEGEND:**
- DELINEATED WETLANDS
 - ESTIMATED / NWI WETLANDS
 - PROPERTY BOUNDARY
 - GRAVEL ROAD
 - SERVICE ROAD
 - STREAM TYPE F
 - STREAM TYPE NP
 - STREAM TYPE NS (INTERMITTENT)
 - W 2 WETLAND NUMBER
 - S 7 STREAM NUMBER



Wetlands Delineated (typ.)

Wetlands Estimated (typ.)

FIGURE 3-4

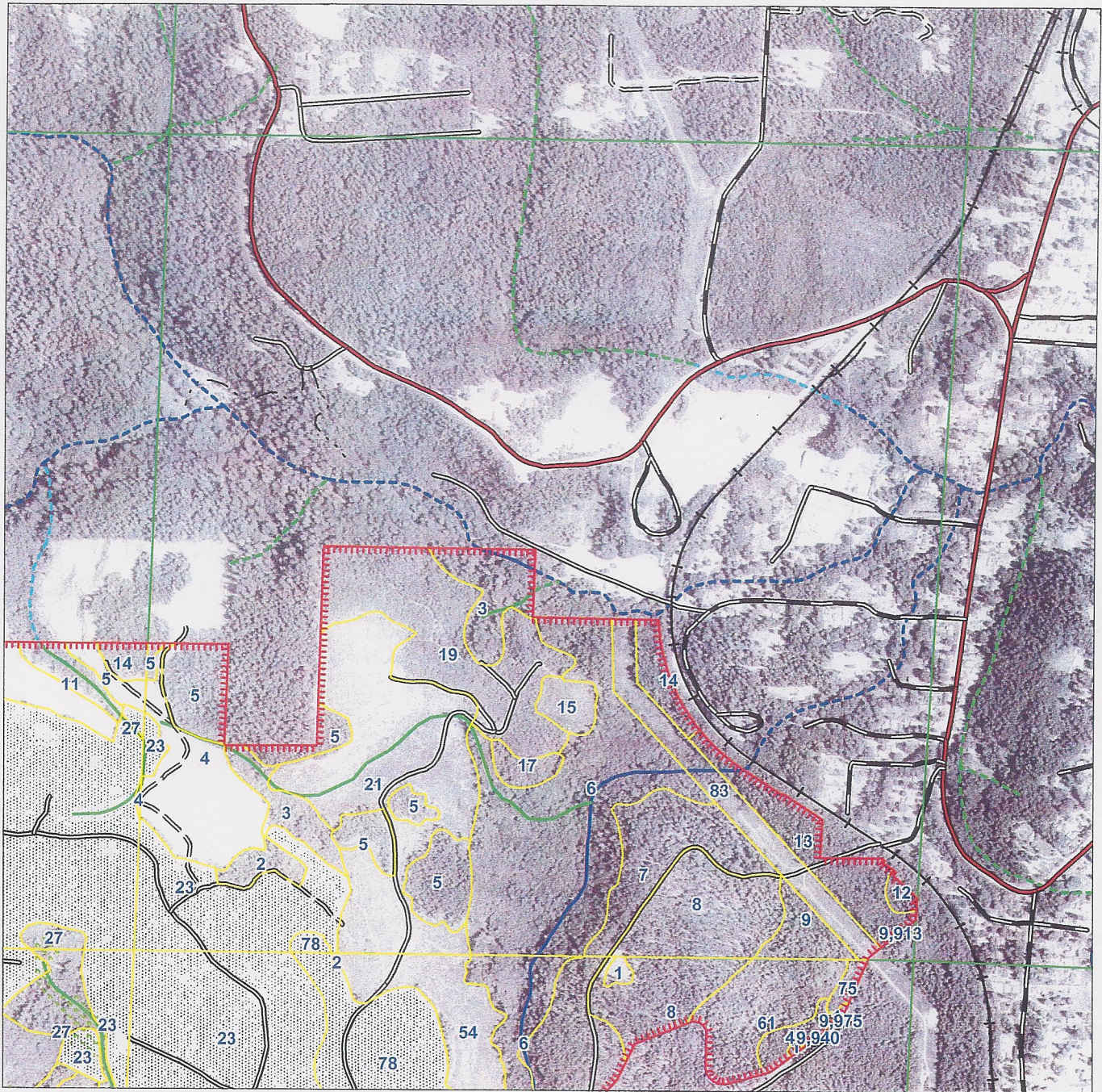
FIGURE 3-2

FIGURE 3-3

Figure 3-1
Ueland Tree Farm
Site Map

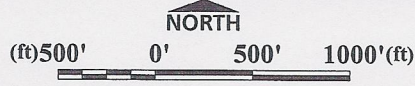
Appendix "G" - 1 of 7 Forest Inventory Maps

Township 24N Range 01E Section 07



Date: 01/20/2004

Timber harvested since last ortho photo update - 1996

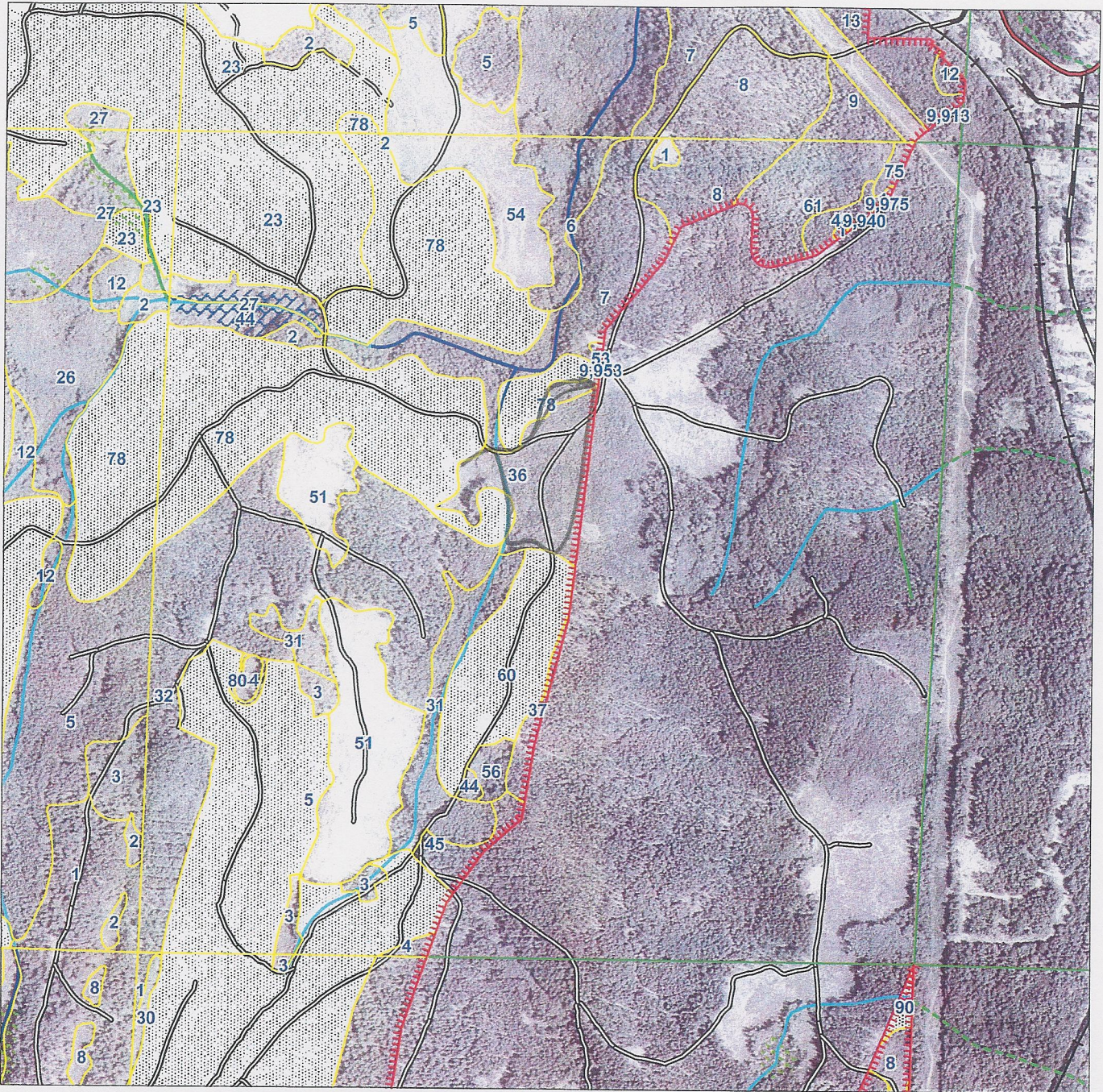


NOTE: All information included in this prospectus is for bidders' convenience only and is neither guaranteed nor warranted in any way by the seller. See the Disclaimer herein for further information.

Type #	Type Call	Count	Type #	Type Call	Count
0002	DF 1949	1	0014	DF 1865	1
0003	Leave Area	2	0015	DF 1992	1
0004	DF 1994	1	0017	WH/DF 1976	1
0005	WH/DF 1962	6	0019	DF 1978	1
0006	MIXED 1946	1	0021	DF 1991	1
0007	DF 1945	1	0023	DF 2003	2
0008	DF 1945	1	0078	DF 1997	1
0009	DF/WH 1970	1	0083	POWER LINE	1
0012	DF/WH 1921	1	9913	RA/DF 1957	1
0013	RA/DF 1957	1			

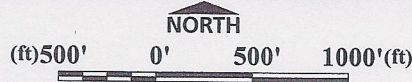
Appendix "G" - 2 of 7 Forest Inventory Maps

Township 24N Range 01E Section 18



Date: 01/20/2004

Timber harvested since last ortho photo update - 1996

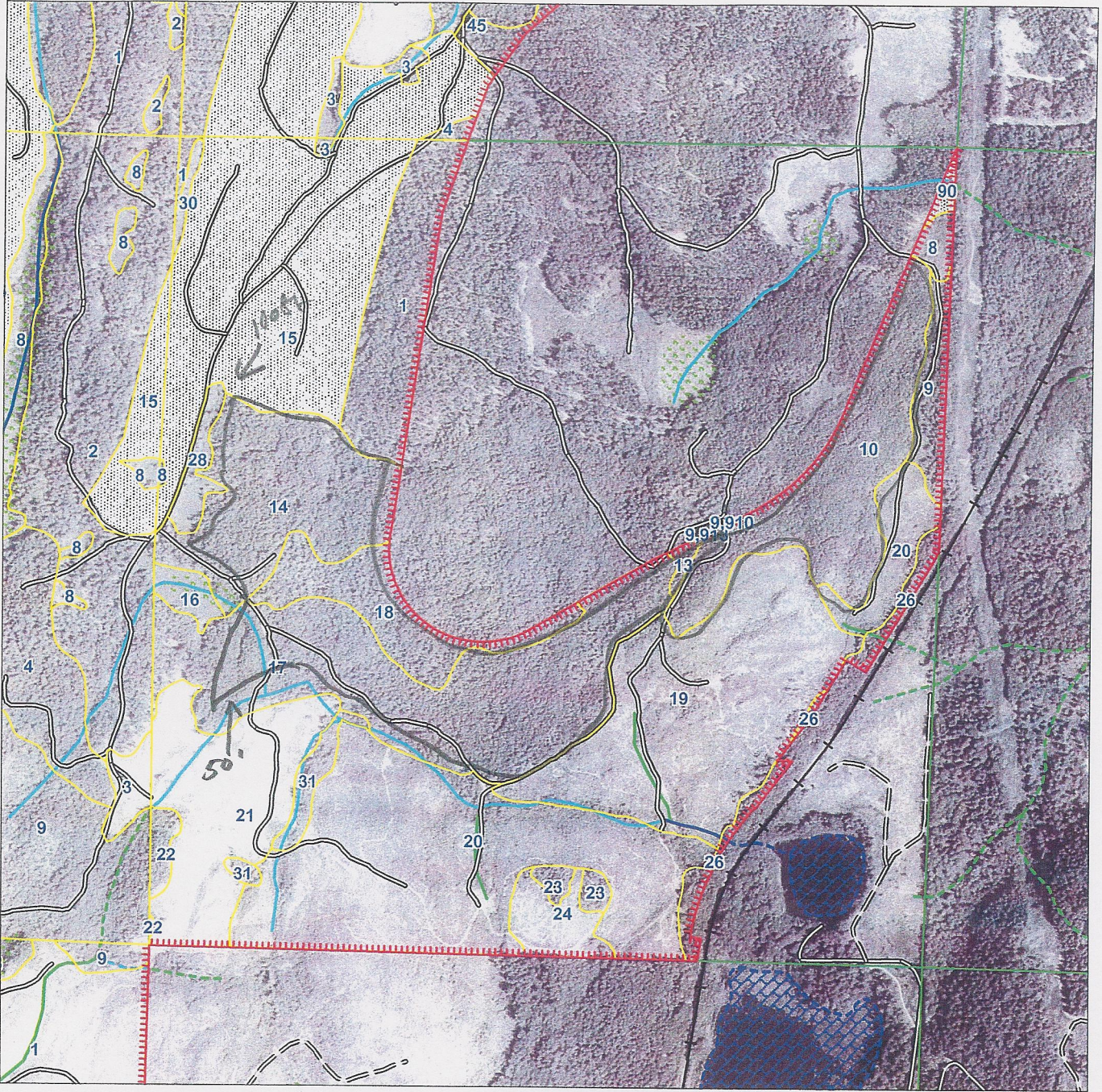


NOTE: All information included in this prospectus is for bidders' convenience only and is neither guaranteed nor warranted in any way by the seller. See the Disclaimer herein for further information.

Type #	Type Call	Count	Type #	Type Call	Count	Type #	Type Call	Count
0001	LANDINGS	3	0031	Leave Area	2	0056	WH 1946	1
0002	DF 1949	2	0032	DF 1942	1	0060	DF 1996	1
0003	LEAVE AREA	3	0036	DF 1986	1	0061	WWP 1960	1
0004	DF 1942	1	0037	DF 1944	1	0075	DF 1987	1
0005	DF/RC 2002	1	0040	DF 1929	1	0078	DF 1997	3
0006	RA/BM 1950	1	0044	SWAMP	3	0080	Leave Area	1
0007	DF 1940	1	0045	DF 1944	1	9940	DF 1929	1
0008	DF 1945	1	0051	DF 1991	2	9953	DF 1992	1
0023	DF 2003	1	0053	DF 1992	1	9975	DF 1987	1
0027	Leave Area	1	0054	DF 1992	1			

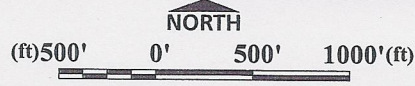
Appendix "G" - 3 of 7 Forest Inventory Maps

Township 24N Range 01E Section 19



Date: 01/20/2004

Timber harvested since last ortho photo update - 1996

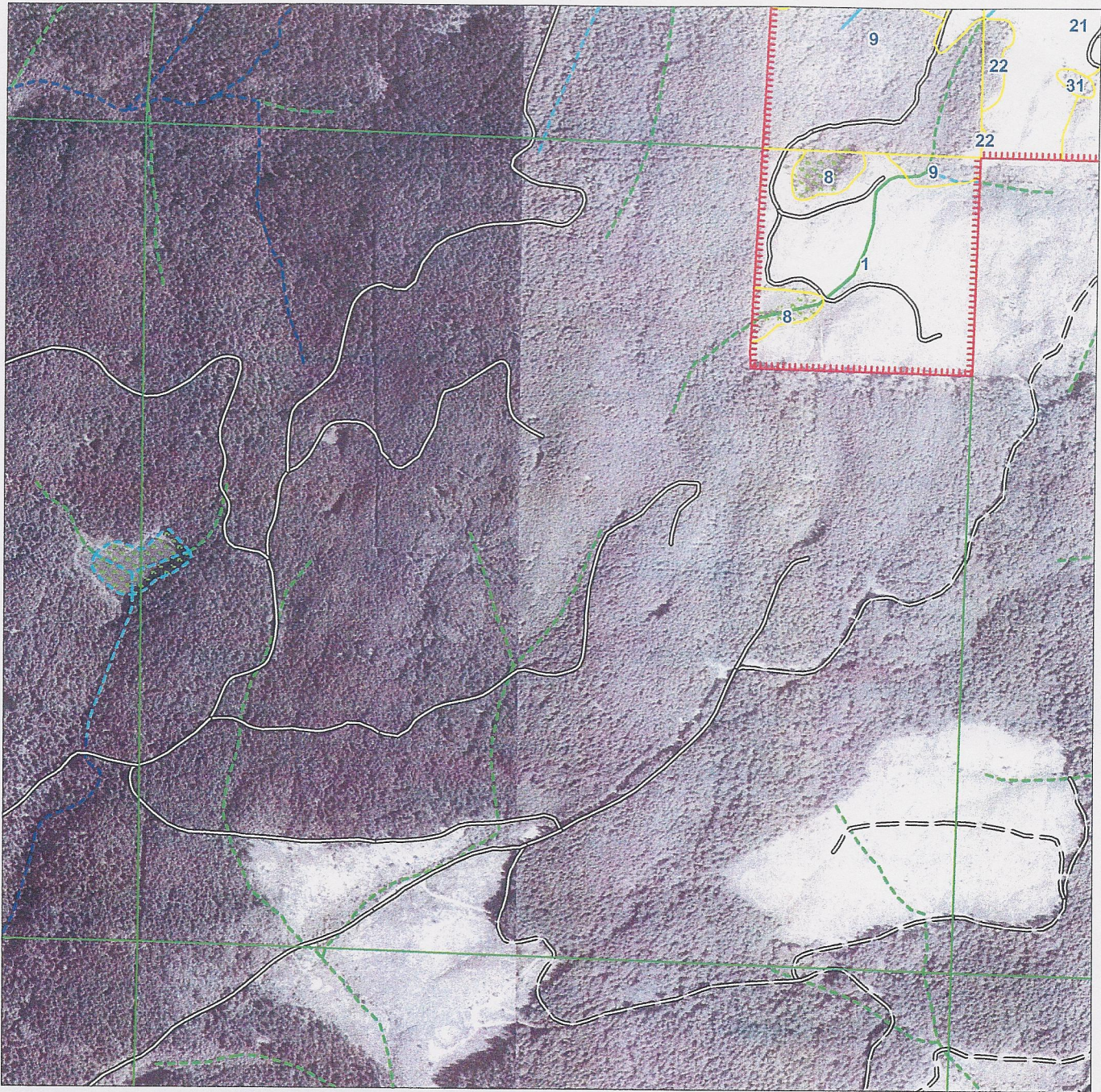


NOTE: All information included in this prospectus is for bidders' convenience only and is neither guaranteed nor warranted in any way by the seller. See the Disclaimer herein for further information.

Type #	Type Call	Count	Type #	Type Call	Count	Type #	Type Call	Count
0001	DF 1947	2	0018	DF 1970	1	0031	SWAMP	2
0003	LEAVE AREA	1	0019	DF 1983	1	0090	DF 1996	1
0008	DF 1989	2	0020	DF 1987	2	9910	DF 1940	1
0009	LEAVE AREA	1	0021	DF 1992	1	9913	RA 1971	1
0010	DF 1940	1	0022	WH 1970	2			
0013	RA 1971	1	0023	LEAVE AREA	2			
0014	DF 1970	1	0024	DF 1992	1			
0015	DF/RC 2002	1	0026	LEAVE AREA	3			
0016	SWAMP	1	0028	SWAMP	1			
0017	DF 1970	1	0030	SWAMP	1			

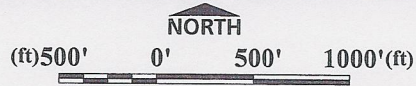
Appendix "G" - 4 of 7 Forest Inventory Maps

Township 24N Range 01W Section 25



Date: 01/20/2004

Timber harvested since last ortho photo update - 1996

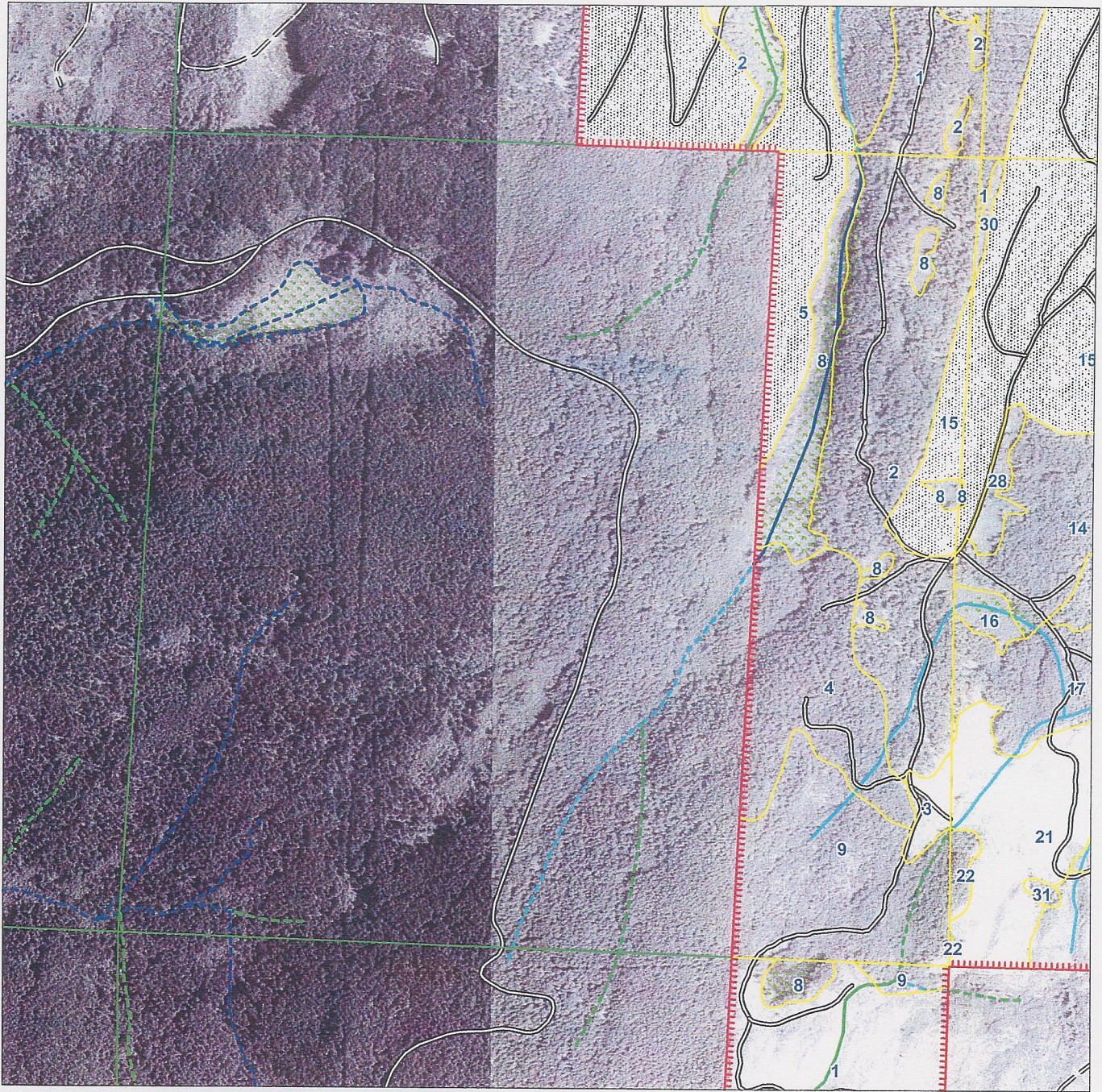


NOTE: All information included in this prospectus is for bidders' convenience only and is neither guaranteed nor warranted in any way by the seller. See the Disclaimer herein for further information.

Type #	Type Call	Count
0001	DF 1990	1
0008	SWAMP	2
0009	WH 1958	1

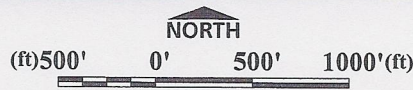
Appendix "G" - 5 of 7 Forest Inventory Maps

Township 24N Range 01W Section 24



Date: 01/20/2004

Timber harvested since last ortho photo update - 1996

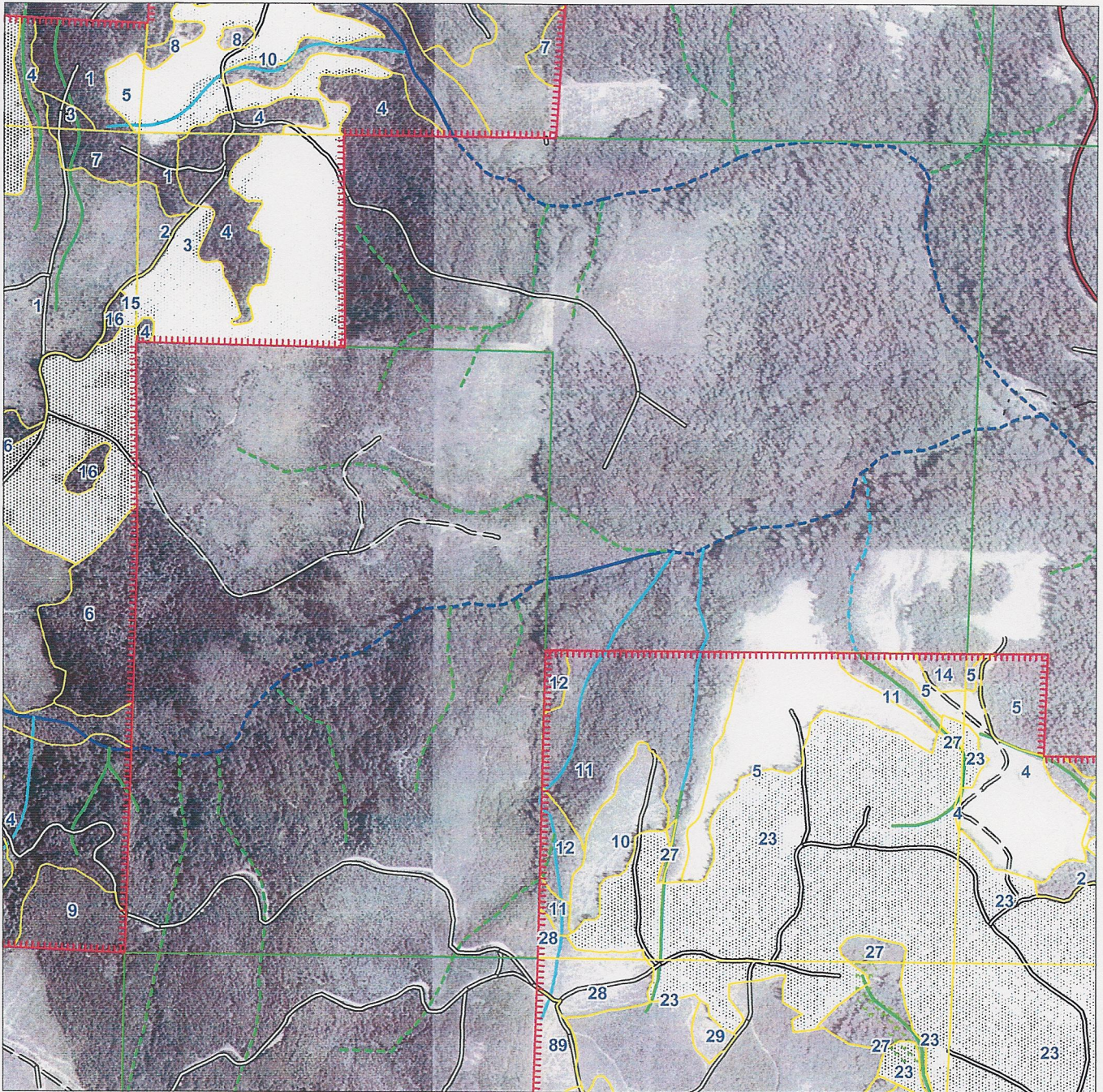


NOTE: All information included in this prospectus is for bidders' convenience only and is neither guaranteed nor warranted in any way by the seller. See the Disclaimer herein for further information.

Type #	Type Call	Count
0002	DF/WH 1947	1
0003	DF 1991	1
0004	DF/WH 1941	1
0005	DF 1999	1
0008	SWAMP	6
0009	WH 1958	1
0015	DF/RC 2002	1

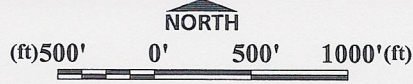
Appendix "G" - 6 of 7 Forest Inventory Maps

Township 24N Range 01W Section 12



Date: 01/20/2004

Timber harvested since last ortho photo update - 1996

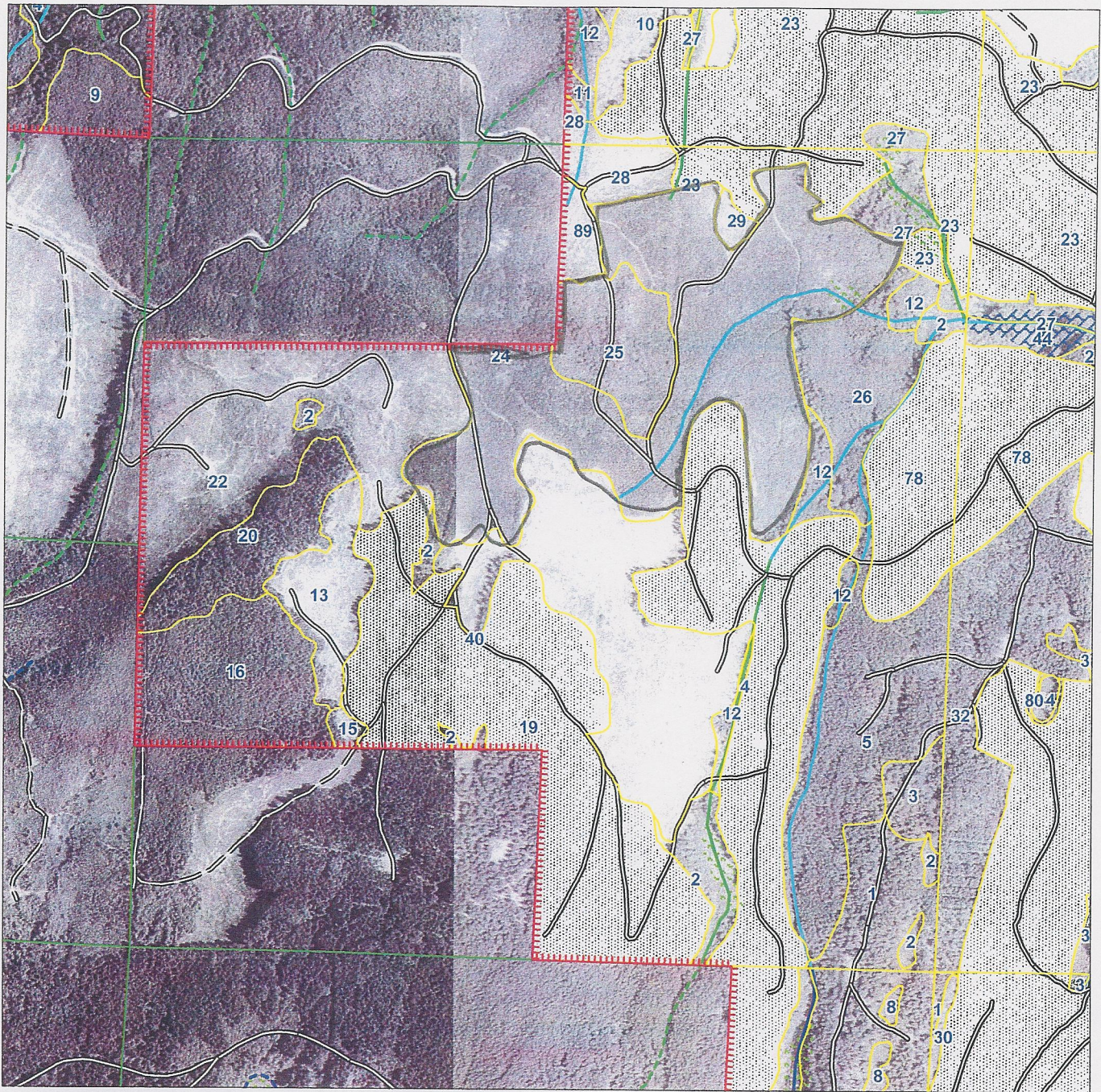


NOTE: All information included in this prospectus is for bidders' convenience only and is neither guaranteed nor warranted in any way by the seller. See the Disclaimer herein for further information.

Type_#	Type_Call	Count
0001	DF 1949	1
0002	DF 1988	1
0003	DF 1995	1
0004	DF 1905	3

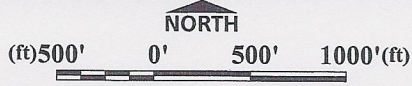
Appendix "G" - 7 of 7 Forest Inventory Maps

Township 24N Range 01W Section 13



Date: 01/20/2004

Timber harvested since last ortho photo update - 1996



NOTE: All information included in this prospectus is for bidders' convenience only and is neither guaranteed nor warranted in any way by the seller. See the Disclaimer herein for further information.

Type #	Type Call	Count	Type #	Type Call	Count	Type #	Type Call	Count
0001	DF 1948	1	0020	DF/WH 1960	1	0078	DF 1997	1
0002	SWAMP	7	0022	DF 1991	1	0089	ROCK PIT	1
0003	DF 1954	1	0023	DF 2003	3			
0004	DF 2000	1	0024	DF 1983	1			
0005	DF 1943	1	0025	DF 1984	1			
0012	Leave Area	4	0026	RA 1960	1			
0013	DF 1992	1	0027	Leave Area	1			
0015	DF 1991	1	0028	DF 1991	1			
0016	DF 1970	1	0029	DF 1991	1			
0019	DF 2000	1	0040	DF 1992	1			

Appendix "H" - 2 of 3
Forest Management Plan/
Inventory Data

Ueland Tree Farm, LLC
Forest Management Plan Update - July 5, 2010

General Information										Road Maintenance				Planting		Plantation Maintenance				Commercial Harvest		Remarks		
Gold Mtn*	18	T21N	R1E	1821175	1987	DF	879	0.92	2009	2009	2009		2009				ok	n/a	ok			2010		
Gold Mtn	18	T21N	R1E	1821178	1997	DF	452	64.8	2009	2009	2009		2009				ok	ok	n/a	ok				
Gold Mtn*	19	T21N	R1E	1921101	1947	DF	184	18.4	2009	2009	2009		2009											CT or FH
Gold Mtn**	19	T21N	R1E	1921108	1989	DF	561	1.81	2009	2009	2009		2009				ok	n/a	ok					
Gold Mtn**	19	T21N	R1E	1921110	1940	DF	358	27.2	2009	2009	2009		2009								ready			High priority to CT
Gold Mtn	19	T21N	R1E	1921113	1970	DF	822	0.79	2009	2009	2009		2009								ready			High priority to CT
Gold Mtn*	19	T21N	R1E	1921114	1970	DF	749	26.8	2009	2009	2009		2009								ready			High priority to CT
Gold Mtn*	19	T21N	R1E	1921115	2002	DF	510	48	2009	2009	2009		2009			ok	ok	2015		2016				
Gold Mtn	19	T21N	R1E	1921117	1970	DF	663	47.7	2009	2009	2009		2009								ready			High priority to CT
Gold Mtn*	19	T21N	R1E	1921118	1970	DF	509	13	2009	2009	2009		2009								ready			High priority to CT
Gold Mtn**	19	T21N	R1E	1921119	1983	DF	416	45.9	2009	2009	2009		2009				ok	n/a	ok					
Gold Mtn	19	T21N	R1E	1921109	1920	DF	180	4.43	2009	2009	2009		2009											Harvest Anytime
Gold Mtn**	19	T21N	R1E	1921120	1987	DF	529	64.9	2009	2009	2009		2009				ok	n/a	ok					
Gold Mtn	19	T21N	R1E	1921121	1992	DF	545	25.9	2009	2009	2009		2009				ok	n/a	ok					
Gold Mtn	19	T21N	R1E	1921122	1970	WH	887	1.97	2009	2009	2009		2009											
Gold Mtn	19	T21N	R1E	1921124	1993	DF	460	5.58	2009	2009	2009		2009				ok	n/a	ok					
Gold Mtn	13	T21N	R1W	1321101	1948	DF	115	11.2	2009	2009	2009		2009											Ready for final harvest
Gold Mtn	13	T21N	R1W	1321103	1954	DF	67	4.2	2009	2009	2009		2009											Ready for final harvest
Gold Mtn	13	T21N	R1W	1321104	1999	DF	850	41.9	2009	2009	2009		2009				ok	n/a	ok					
Gold Mtn	13	T21N	R1W	1321105	1943	DF	149	31.5	2009	2009	2009		2009										2010	Poles or FH
Gold Mtn	13	T21N	R1W	1321113	1992	DF	451	10.7	2009	2009	2009		2009				ok	n/a	ok					
Gold Mtn	13	T21N	R1W	1321115	1991	DF	531	0.92	2009	2009	2009		2009				ok	n/a	ok					
Gold Mtn	13	T21N	R1W	1321116	1970	DF	594	23.3	2009	2009	2009		2009											Needs to be CT
Gold Mtn	13	T21N	R1W	1321119	2000	DF	506	61.7	2009	2009	2009		2009			ok	ok	2015		2016				
Gold Mtn	13	T21N	R1W	1321120	1960	DF	576	13.9	2009	2009	2009		2009											Needs to be CT
Gold Mtn	13	T21N	R1W	1321122	1991	DF	356	45	2009	2009	2009		2009				ok	n/a	ok					
Gold Mtn	13	T21N	R1W	1321123	2003	DF	426	13.8	2009	2009	2009		2009			ok	ok	2015		2016				
Gold Mtn	13	T21N	R1W	1321124	1983	DF	458	72.5	2009	2009	2009		2009										2005	
Gold Mtn	13	T21N	R1W	1321125	1984	DF	414	12.8	2009	2009	2009		2009										2005	
Gold Mtn	13	T21N	R1W	1321126	1960	DF	320	15.5	2009	2009	2009		2009											Final harvest anytime
Gold Mtn	13	T21N	R1W	1321128	1991	DF	296	4.68	2009	2009	2009		2009				ok	n/a	ok					
Gold Mtn	13	T21N	R1W	1321129	1991	DF	331	1.29	2009	2009	2009		2009				ok	n/a	ok					
Gold Mtn	13	T21N	R1W	1321140	1992	DF	496	42.8	2009	2009	2009		2009				ok	n/a	2009					
Gold Mtn	13	T21N	R1W	1321178	1997	DF	452	18.3	2009	2009	2009		2009				2004	2112		2113				
Gold Mtn	24	T24N	R1W	2424102	1947	DF	119	52.6	2009	2009	2009		2009										2010	Poles or FH
Gold Mtn	24	T24N	R1W	2424103	1992	DF	360	2.36	2009	2009	2009		2009				ok	n/a	ok					

Appendix "H" - 3 of 3
Forest Management Plan/
Inventory Data

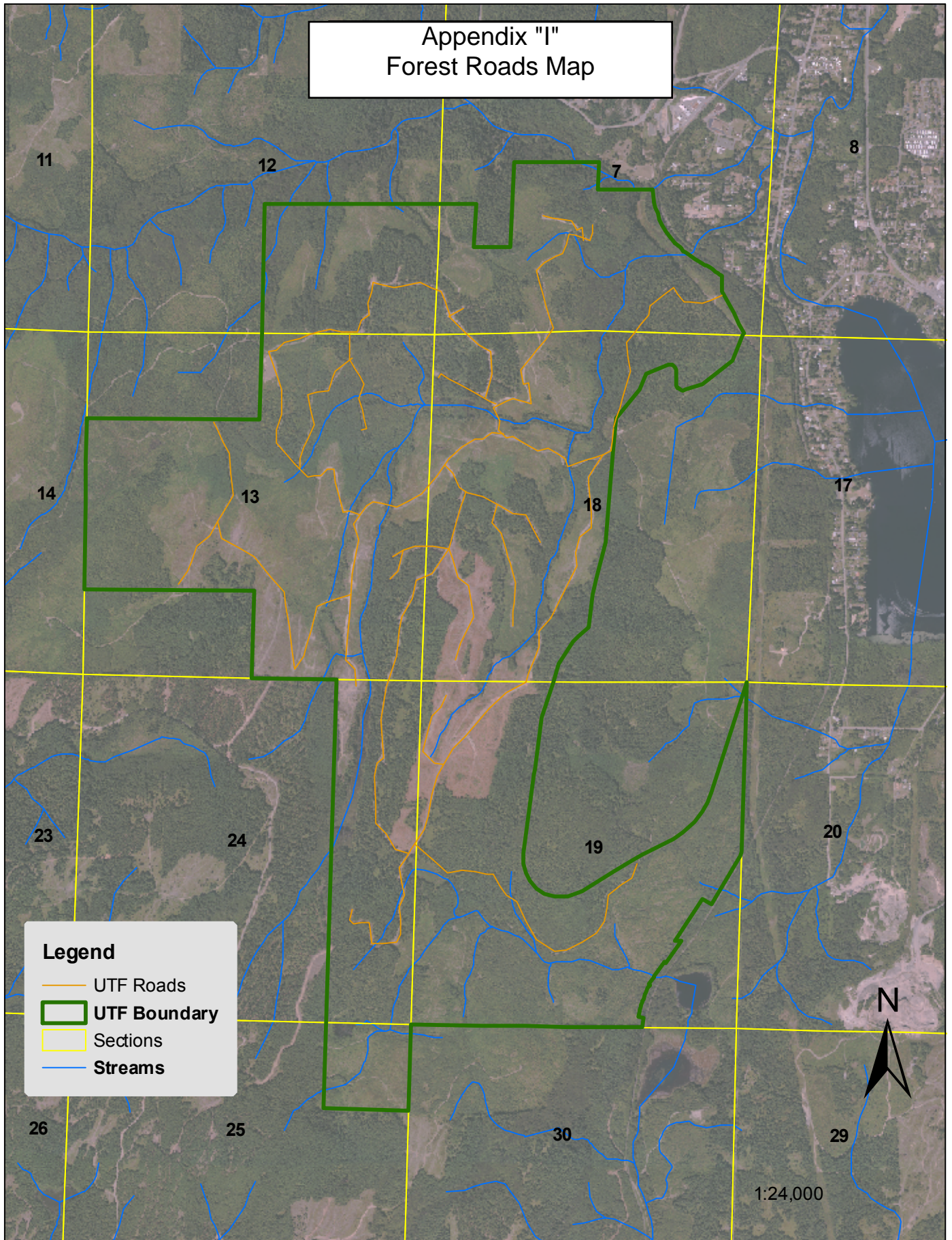
Ueland Tree Farm, LLC
Forest Management Plan Update - July 5, 2010

General Information								Road Maintenance				Planting		Plantation Maintenance				Commercial Harvest		Remarks			
Gold Mtn*	24	T24N	R1W	2424104	1941	DF	314	26.7	2009	2009	2009		2009									2010	Poles or FH
Gold Mtn	24	T24N	R1W	2424105	1999	DF	850	12.8	2009	2009	2009		2009				ok	n/a	ok		2009		
Gold Mtn*	24	T24N	R1W	2424109	1958	WH	759	32.4	2009	2009	2009		2009										
Gold Mtn	24	T24N	R1W	2424115	2002	DF	510	7.77	2009	2009	2009		2009			ok	ok	ok	2013		2014		
Gold Mtn	25	T24N	R1W	2524101	1990	DF	634	36.1	2009	2009	2009		2009				ok	n/a	ok				
Gold Mtn	25	T24N	RIW	2524109	1958	DF	762	2.13	2009	2009	2009		2009										

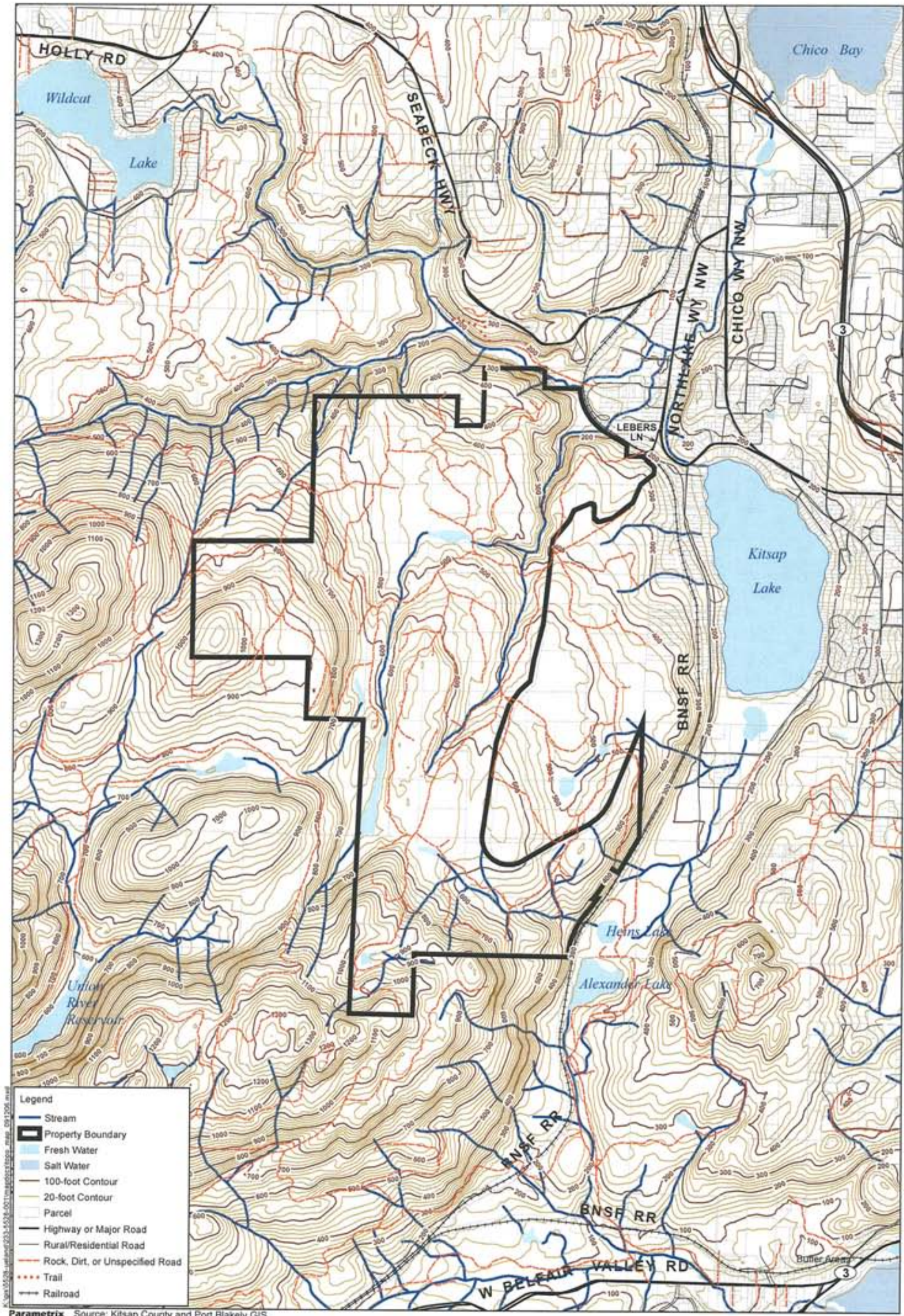
* = Mineral Extraction

** = Potential Residential use

Appendix "I"
Forest Roads Map



Appendix "J" - 1 of 8
Topography



Legend

- Stream
- Property Boundary
- Fresh Water
- Salt Water
- 100-foot Contour
- 20-foot Contour
- Parcel
- Highway or Major Road
- Rural/Residential Road
- Rock, Dirt, or Unspecified Road
- Trail
- Railroad

Parametrix Source: Kitsap County and Port Blakely GIS

Map 3
Ueland Tree Farm
Topography Map

Appendix "J" - 2 of 8 Species Lists

Table D-1. Plant Species Potentially Present in the UTF Project Area

Common Name	Scientific Name
Yarrow	<i>Achillea millefolium</i>
Hair grass	<i>Aira caryophylla</i>
Quackgrass	<i>Agropyron repens</i>
Bentgrass	<i>Agrostis alba</i>
Colonial bentgrass	<i>Agrostis capillaries</i>
Serviceberry	<i>Amelanchier alnifolia</i>
Rosy pussy-toes	<i>Antennaria microphylla</i>
Sweet vernal grass	<i>Anthoxanthum odoratum</i>
Common dogbane	<i>Apocynum cannabinum</i>
Pacific madrone	<i>Arbutus menziesii</i>
Kinnikinnick	<i>Arctostaphylos uva-ursi</i>
English daisy	<i>Bellis perennis</i>
Deer fern	<i>Blechnum spicant</i>
Leathery grape-fern	<i>Botrychium multifidum</i>
Bittercress	<i>Cardamine sp.</i>
Dewey's Sedge	<i>Carex deweyana</i>
Slough sedge	<i>Carex obnupta</i>
Long-stoloned sedge	<i>Carex pensylvanica</i>
Indian-paintbrush	<i>Castilleja miniata</i>
Enchanter's nightshade	<i>Circaea alpina</i>
Redtwig dogwood	<i>Cornus sericea</i>
Varied-leaf collomia	<i>Collomia heterophylla</i>
Beaked hazelnut	<i>Corylus cornuta</i>
Single-seed hawthorne	<i>Crataegus monogyna</i>
Scot broom	<i>Cytisus scoparius</i>
Orchard grass	<i>Dactylis glomerata</i>
Foxglove	<i>Digitalis purpurea</i>
Wildrye	<i>Elymus sp.</i>
Fireweed	<i>Epilobium angustifolium</i>
Oregon sunshine	<i>Eriophyllum lanatum</i>
Giant fawn-lily	<i>Erythronium oregonum</i>
Red Fescue	<i>Festuca rubra</i>
Strawberry	<i>Fragaria sp.</i>
Oregon ash	<i>Fraxinus latifolia</i>
Bedstraw	<i>Galium sp.</i>
Salal	<i>Gaultheria shallon</i>
Dovefoot geranium	<i>Geranium molle</i>
Oceanspray	<i>Holodiscus discolor</i>
St. John's Wort	<i>Hypericum sp.</i>
False-dandelion	<i>Hypochaeris radicata</i>

Appendix "J" - 3 of 8 Species Lists

Table D-1. Plant Species Potentially Present in the UTF Project Area

Common Name	Scientific Name
Dead-nettle	<i>Lamium maculatum</i>
Leafy peavine	<i>Lathyrus polyphyllus</i>
Tall pepperweed	<i>Lepidium virginicum</i>
Oxeye daisy	<i>Leucanthemum vulgare</i>
Twinflower	<i>Linnaea borealis</i>
Orange honeysuckle	<i>Lonicera ciliosa</i>
Black twinberry	<i>Lonicera involucrata</i>
Lupine	<i>Lupinus sp.</i>
Wood rush sp.	<i>Luzula campestris</i>
Tall Oregon grape	<i>Mahonia aquifolium</i>
Dull Oregon grape	<i>Mahonia nervosa</i>
False lily-of-the-valley	<i>Maianthemum dilatatum</i>
Microsteris	<i>Microsteris gracilis</i>
Indian-plum	<i>Oemleria cerasiformis</i>
Pacific ninebark	<i>Physocarpus capitatus</i>
Lodgepole pine	<i>Pinus cartorta</i>
Narrow-leaf plantain	<i>Plantago lanceolata</i>
Sword fern	<i>Polystichum munitum</i>
Black cottonwood	<i>Populus trichocarpa</i>
Cherry-laurel	<i>Prunus laurocerasus</i>
Douglas fir	<i>Pseudotsuga menziesii</i>
Bracken fern	<i>Pteridium aquilinum</i>
Common pink wintergreen	<i>Pyrola asarifolia</i>
Oregon white oak	<i>Quercus garryana</i>
Western buttercup	<i>Ranunculus occidentalis</i>
Cascara	<i>Rhamnus purshiana</i>
Red-flowering currant	<i>Ribes sanguineum</i>
Baldhip rose	<i>Rosa gymnocarpa</i>
Black raspberry	<i>Rubus leucodermis</i>
Trailing blackberry	<i>Rubus ursinus</i>
Sheep-sorrel	<i>Rumex acetosella</i>
Moss	<i>Rytidiadelphus sp.</i>
Pacific willow	<i>Salix lucida</i>
Scouler's willow	<i>Salix scouleriana</i>
Sitka willow	<i>Salix sitchensis</i>
Yerbabuena	<i>Satureja douglasii</i>
Western Solomon-plume	<i>Smilacina racemosa</i>
Spirea	<i>Spiraea douglasii</i>
Chickweed	<i>Stellaria crispa</i>
Common snowberry	<i>Symphoricarpos albus</i>

Appendix "J" - 4 of 8
Species Lists

Table D-1. Plant Species Potentially Present in the UTF Project Area

Common Name	Scientific Name
Western red cedar	<i>Thuja plicata</i>
Starflower	<i>Trientalis latifolia</i>
Trillium	<i>Trillium ovetime</i>
Western hemlock	<i>Tsuga heterophylla</i>
Evergreen huckleberry	<i>Vaccinium ovatum</i>
Blueberry	<i>Vaccinium sp.</i>
Germander speedwell	<i>Veronica chamaedrys</i>
Early blue violet	<i>Viola adunca</i>
Yellow violet	<i>Viola glabella</i>
Marsh violet	<i>Viola palustris</i>
Whipplevine	<i>Whipplea modesta</i>

<p>Appendix "J" - 5 of 8 Species Lists</p>
--

Table D-2. Wildlife Species That May Potentially Occur Within The UTF Project Area

Common Name	Scientific Name
<u>Amphibians</u>	
Bullfrog	<i>Rana catesbeiana</i>
Ensatina	<i>Ensatina eschscholzii</i>
Long-toed salamander	<i>Ambystoma macrodactylum</i>
Northern red-legged frog	<i>Rana aurora aurora</i>
Northwestern salamander	<i>Ambystoma gracile</i>
Pacific treefrog	<i>Hyla regilla</i>
Western red-backed salamander	<i>Plethodon vehiculum</i>
<u>Reptiles</u>	
Common garter snake	<i>Thamnophis sirtalis</i>
Northern alligator lizard	<i>Elgaria coerulea</i>
Northern garter snake	<i>Thamnophis ordinoides</i>
Rubber Boa	<i>Charina bottae</i>
Western terrestrial garter snake	<i>Thamnophis elegans</i>
<u>Birds</u>	
American coot	<i>Fulica Americana</i>
American crow	<i>Corvus brachyrhynchous</i>
American goldfinch	<i>Spinus tristis</i>
American robin	<i>Turdus migratorius</i>
Band-tailed pigeon	<i>Columbia fasciata</i>
Barn owl	<i>Tyto abla</i>
Barred owl	<i>Strix varia</i>
Black-capped chickadee	<i>Parus atricapillus</i>
Black-headed grosbeak	<i>Pheucticus melancephalus</i>
Black-throated gray warbler	<i>Dendroica nigrescens</i>
Blue-winged teal	<i>Anas discors</i>
Bohemian waxwing	<i>Bombycilla garrula</i>
Brewer's blackbird	<i>Euphagus cyanocephalus</i>
Brown creeper	<i>Certhia americana</i>
Brown-headed cowbird	<i>Molothrus ater</i>
Cedar waxwing	<i>Bombycilla cedrorum</i>
Chestnut-backed chickadee	<i>Parus urufescens</i>
Chipping sparrow	<i>Spizella passerina</i>
Cinnamon teal	<i>Anas cyanoptera</i>
Clark's nutcracker	<i>Nucifraga columbiana</i>
Common nighthawk	<i>Chordeiles minor</i>
Common raven	<i>Corvus corax</i>
Common redpoll	<i>Acanthis flammea</i>
Cooper's Hawk	<i>Accipiter cooperii</i>

<p>Appendix "J" - 6 of 8 Species Lists</p>
--

Table D-2. Wildlife Species That May Potentially Occur Within The UTF Project Area

Common Name	Scientific Name
Dark-eyed junco	<i>Junco hyemalis</i>
European starling	<i>Sturnus vulgaris</i>
Evening grosbeak	<i>Hesperiphona vespertina</i>
Fox sparrow	<i>Passerella iliaca</i>
Gadwall	<i>Anas strepera</i>
Golden-crowned kinglet	<i>Regulus satrapa</i>
Golden-crowned sparrow	<i>Zonotrichia atricapilla</i>
Gray jay	<i>Perisoreus canadensis</i>
Great-blue heron	<i>Ardea herodias</i>
Great-horned owl	<i>Bubo virginianus</i>
Green-winged teal	<i>Anas crecca</i>
Hairy woodpecker	<i>Dendrocopos villosus</i>
Hammond's flycatcher	<i>Empidonax hammondii</i>
Hermit thrush	<i>Hylocichla guttata</i>
Hermit warbler	<i>Dendroica occidentalis</i>
Hooded merganser	<i>Lophodytes cucullatus</i>
Lincoln's sparrow	<i>Melospiza lincolnii</i>
Long-eared owl	<i>Asio uotus</i>
Mallard	<i>Anas platyrhynchos</i>
Mourning dove	<i>Zenaidura macroura</i>
Nashville warbler	<i>Vermivora ruficapilla</i>
Northern flicker	<i>Colaptes auratus</i>
Northern goshawk	<i>Accipiter gentilis</i>
Northern saw-whet owl	<i>Aegolius acadicus</i>
Northern shoveler	<i>Anas clypeata</i>
Olive-sided flycatcher	<i>Contopus borealis</i>
Orange-crowned warbler	<i>Vermivora celata</i>
Pacific slope flycatcher	<i>Empidonax difficilis</i>
Pileated woodpecker	<i>Dryocopus pileatus</i>
Pine grosbeak	<i>Pinicola enucleator</i>
Pine siskin	<i>Spinus pinus</i>
Purple finch	<i>Carpodacus purpureus</i>
Purple martin	<i>Progne subis</i>
Red-breasted nuthatch	<i>Sitta ucanadensis</i>
Red-breasted sapsucker	<i>Sphyrapicus varius</i>
Red-tailed hawk	<i>Buteo jamaicensis</i>
Ruby-crowned kinglet	<i>Regulus calendula</i>
Ruddy duck	<i>Oxyura jamaicensis</i>
Ruffed grouse	<i>Bonasa umbellus</i>
Rufous hummingbird	<i>Selasphorus rufus</i>
Screech owl	<i>Otus asio</i>
Sharped-skinned hawk	<i>Accipiter striatus</i>
Solitary vireo	<i>Vireo solitarius</i>

<p>Appendix "J" - 7 of 8 Species Lists</p>
--

Table D-2. Wildlife Species That May Potentially Occur Within The UTF Project Area

Common Name	Scientific Name
Song sparrow	<i>Melospiza melodia</i>
Spotted toehee	<i>Pipilo erythrophthalmus</i>
Steller's jay	<i>Cyanocitta cristata</i>
Swainson's thrush	<i>Hylocichla ustulata</i>
Townsend's solitaire	<i>Myadestes townsendi</i>
Townsend's warbler	<i>Dendroica townsendi</i>
Tree swallow	<i>Tachycineta bicolor</i>
Varied thrush	<i>Ixoreus naevius</i>
Violet-green swallow	<i>Tachycineta thalassina</i>
Western tanager	<i>Piranaga ludoviciana</i>
Western wood peewee	<i>Contopus usordidulus</i>
White-crowned sparrow	<i>Zonotrichia leucophrys</i>
Wilson's warbler	<i>Wilsonia pusilla</i>
Winter wren	<i>Troglodytes troglodytes</i>
Wood duck	<i>Aix sponsa</i>
Yellow-rumped warbler	<i>Dendroica coronata</i>
<u>Mammals</u>	
Big brown bat	<i>Eptesicus fuscus</i>
Black-tailed deer	<i>Odocoileus hemionus</i>
Bushy-tailed wood rat	<i>Neotoma cinerea</i>
California myotis	<i>Myotis californicus</i>
Coyote	<i>Canis latrans</i>
Deer mouse	<i>Peromyscus maniculatus</i>
Douglas squirrel	<i>Tamiasciurus douglasii</i>
Gray squirrel	<i>Sciurus griseus</i>
Hoary bat	<i>Lasiurus cinereus</i>
House mouse	<i>Mus musculus</i>
Little brown myotis	<i>Myotis lucifugus</i>
Long-eared myotis	<i>Myotis evotis</i>
Long-tailed weasel	<i>Mustela frenata</i>
Masked shrew	<i>Sorex cinereus</i>
Mountain beaver	<i>Aplodontia rufa</i>
Northern flying squirrel	<i>Glaucomys sabrinus</i>
Pacific jumping mouse	<i>Zapus trinotatus</i>
Pacific mole	<i>Scapanus orarius</i>
Porcupine	<i>Erethizon dorsatum</i>
Raccoon	<i>Procyon lotor</i>
Red fox	<i>Vulpes vulpes</i>
Short-tailed weasel	<i>Mustela erminea</i>
Shrew mole	<i>Neurotrichus gibbsii</i>
Snowshoe hare	<i>Lepus americanus</i>
Southern red-backed vole	<i>Clethrionomys gapperi</i>
Striped skunk	<i>Mephitis mephitis</i>

Appendix "J" - 8 of 8
Species Lists

Table D-2. Wildlife Species That May Potentially Occur Within The UTF Project Area

Common Name	Scientific Name
Townsend chipmunk	<i>Tamias townsendii</i>
Townsend vole	<i>Microtus townsendii</i>
Trowbridge shrew	<i>Sorex trowbridgii</i>
Vagrant shrew	<i>Sorex vagrans</i>
Western jumping mouse	<i>Zapus princeps</i>
Yuma myotis	<i>Myotis yumanensis</i>
Cougar	<i>Puma concolor</i>
Bobcat	<i>Lynx lufus</i>
Black Bear	<i>Ursus americanus</i>