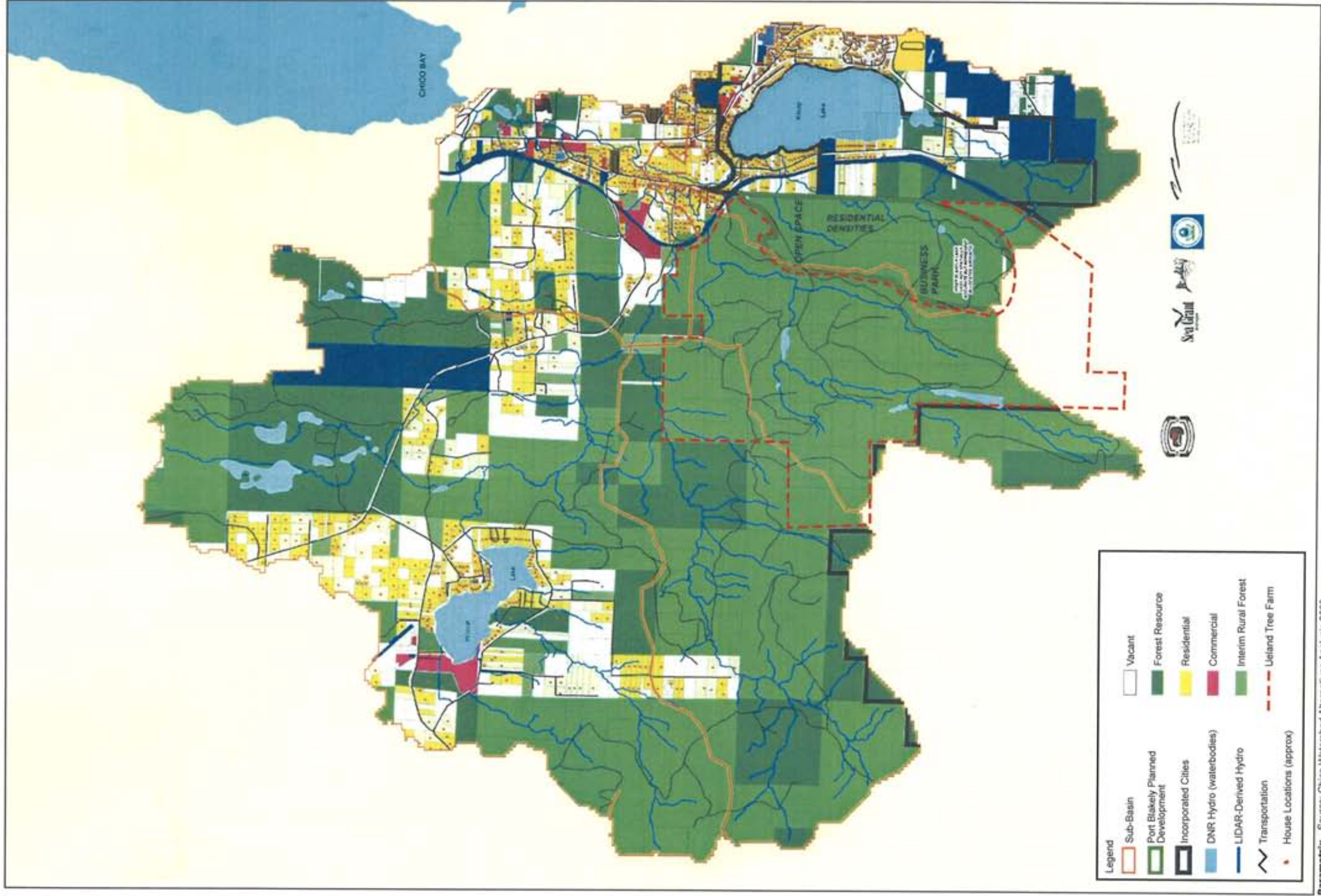


APPENDIX A

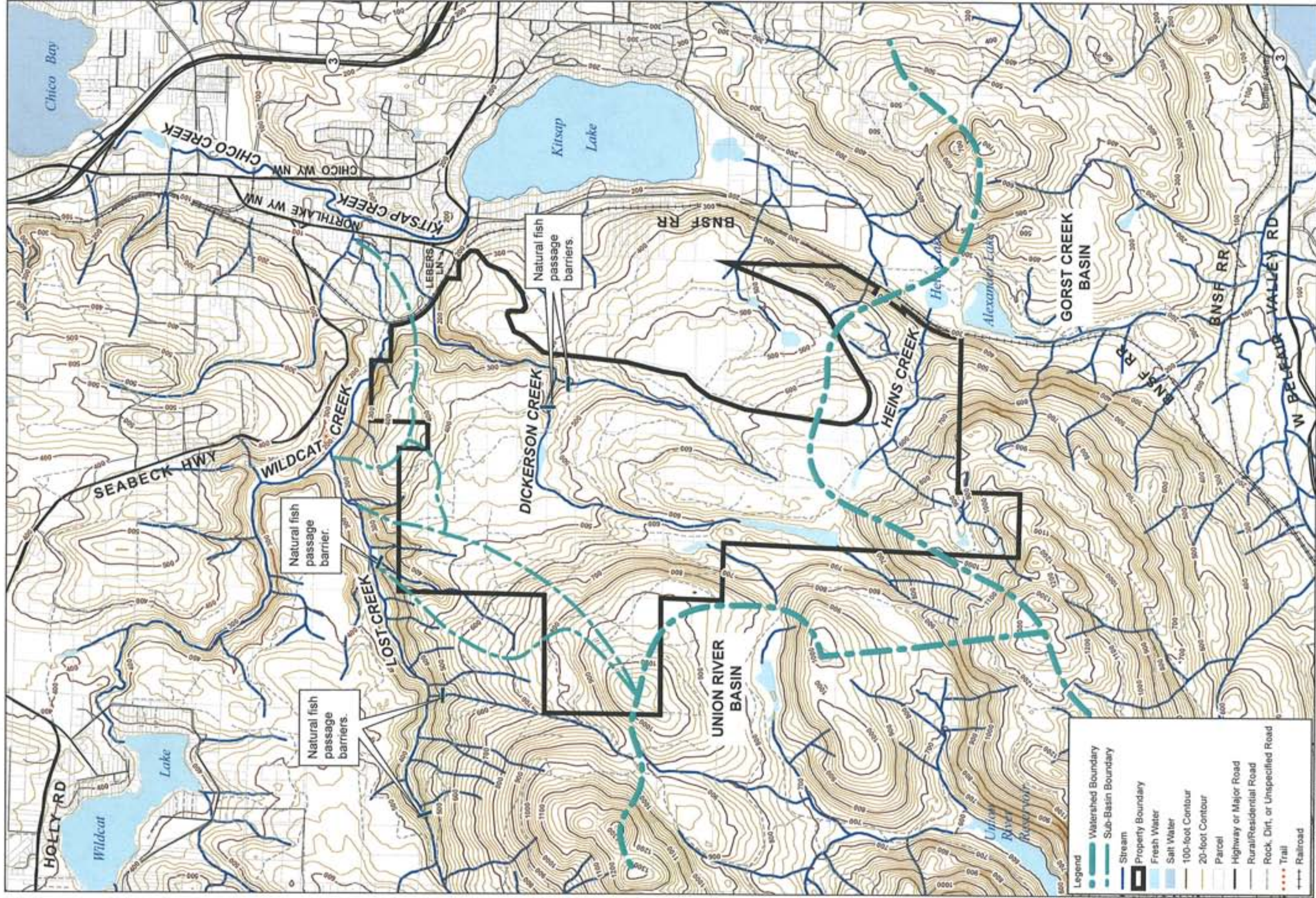
Maps



Parametrix Source: Chico Watershed Alternatives Analysis 2003



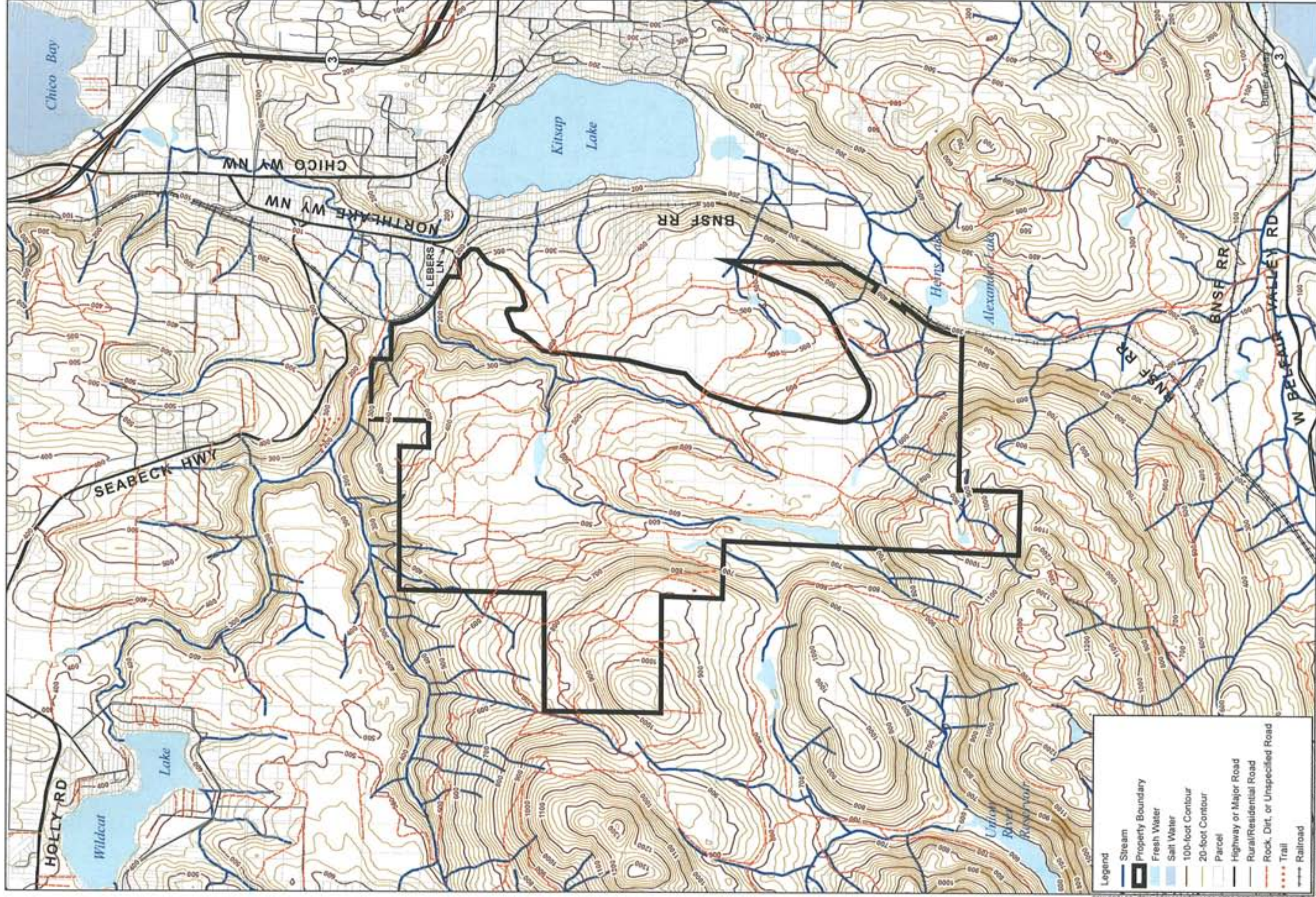
Map 1
Ueland Tree Farm
Chico Creek Watershed Map



Parametrix Source: Kitsap County and Port Blakely GIS



Map 2
Ueland Tree Farm
Sub-Basin Boundaries, Surface Water Features
and Fish Passage Barriers



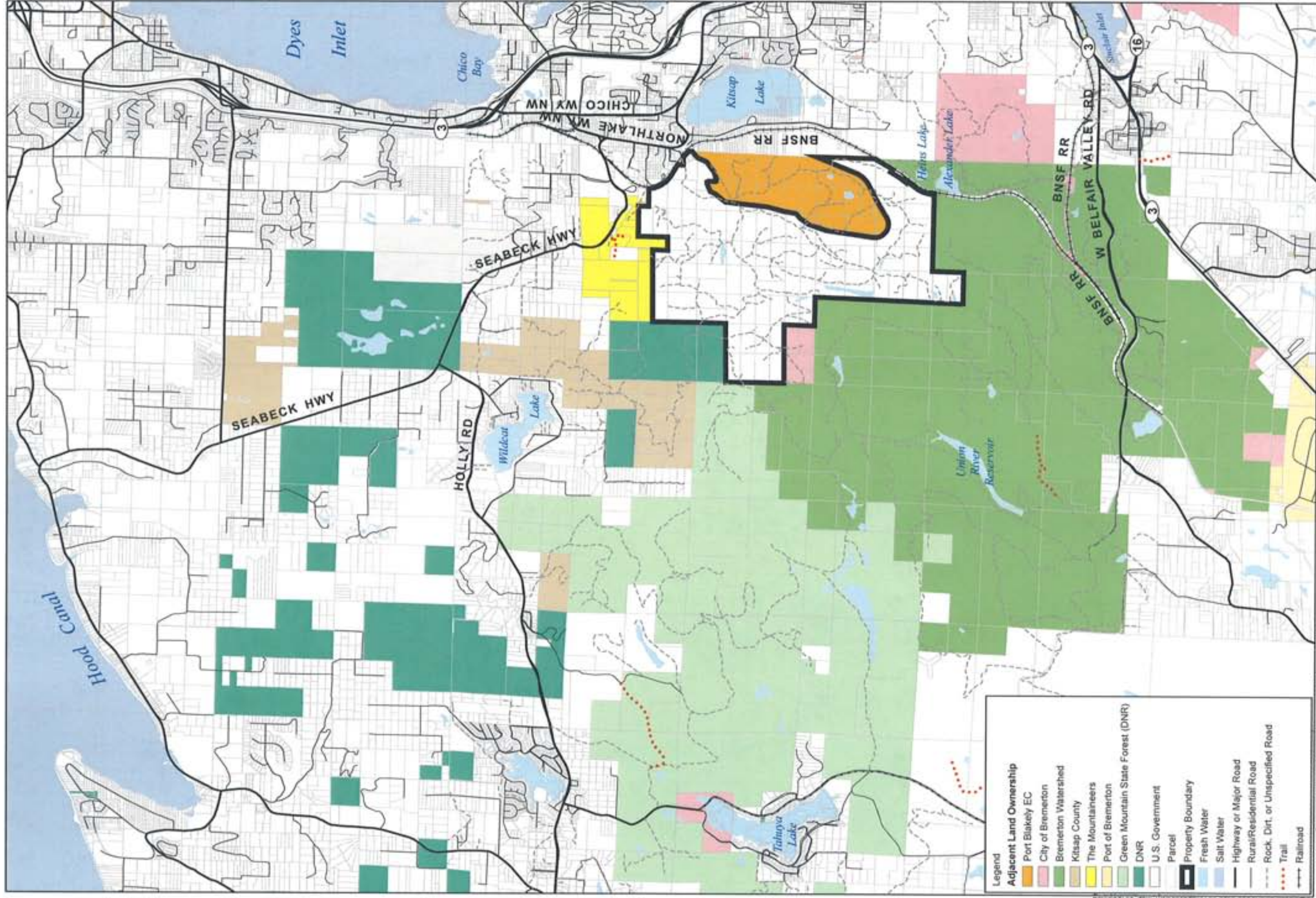
Legend

- Stream
- Property Boundary
- Fresh Water
- Salt Water
- 100-foot Contour
- 20-foot Contour
- Parcel
- Highway or Major Road
- Rural/Residential Road
- Rock, Dirt, or Unspecified Road
- Trail
- Railroad

Parametrix Source: Kitsap County and Port Blakely GIS



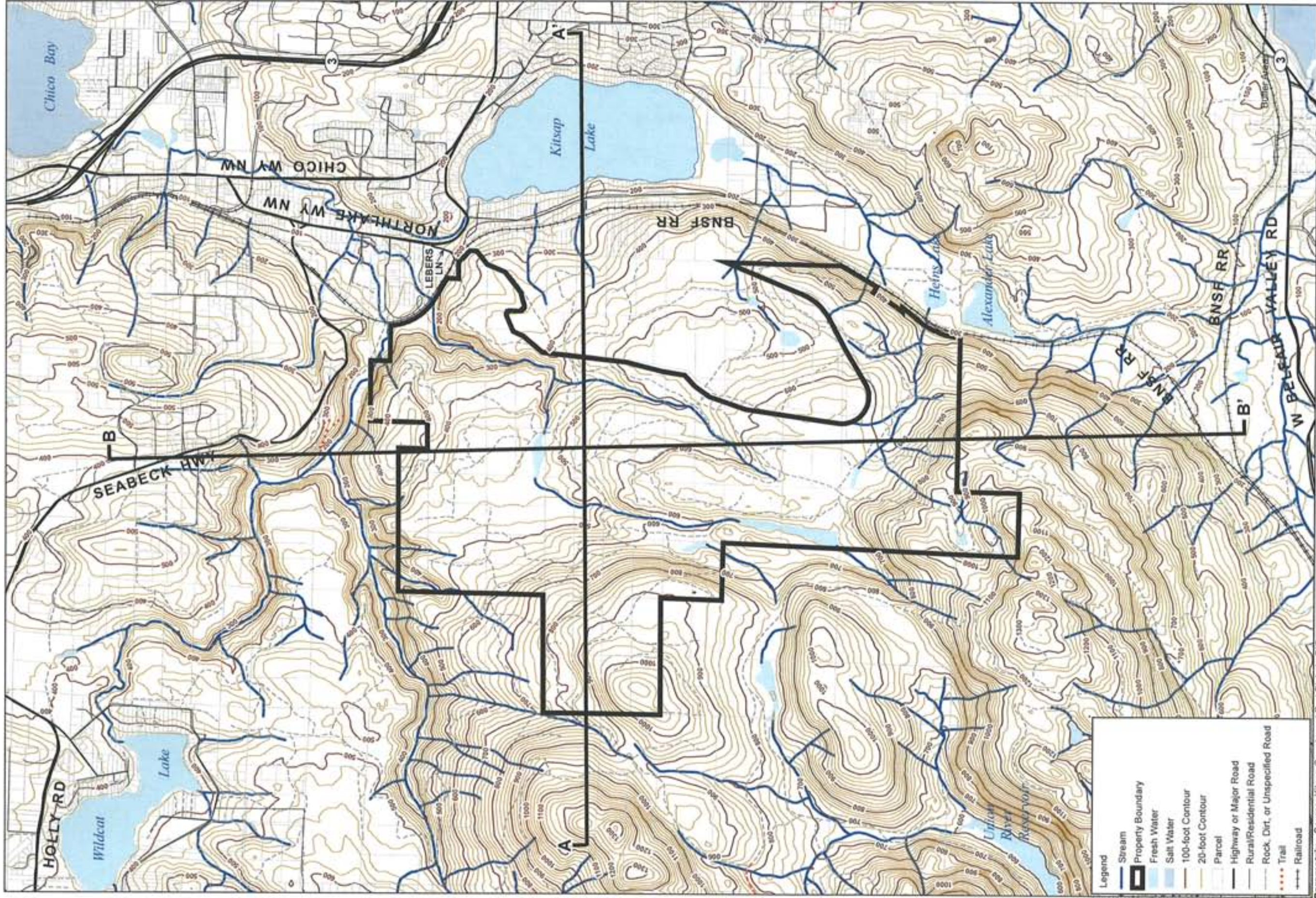
Map 3
Ueland Tree Farm
Topography Map



Map 4
 Ueland Tree Farm
 Adjacent Land Ownership Map

Parametrix Source: Kitsap County Assessor's Records 2006.

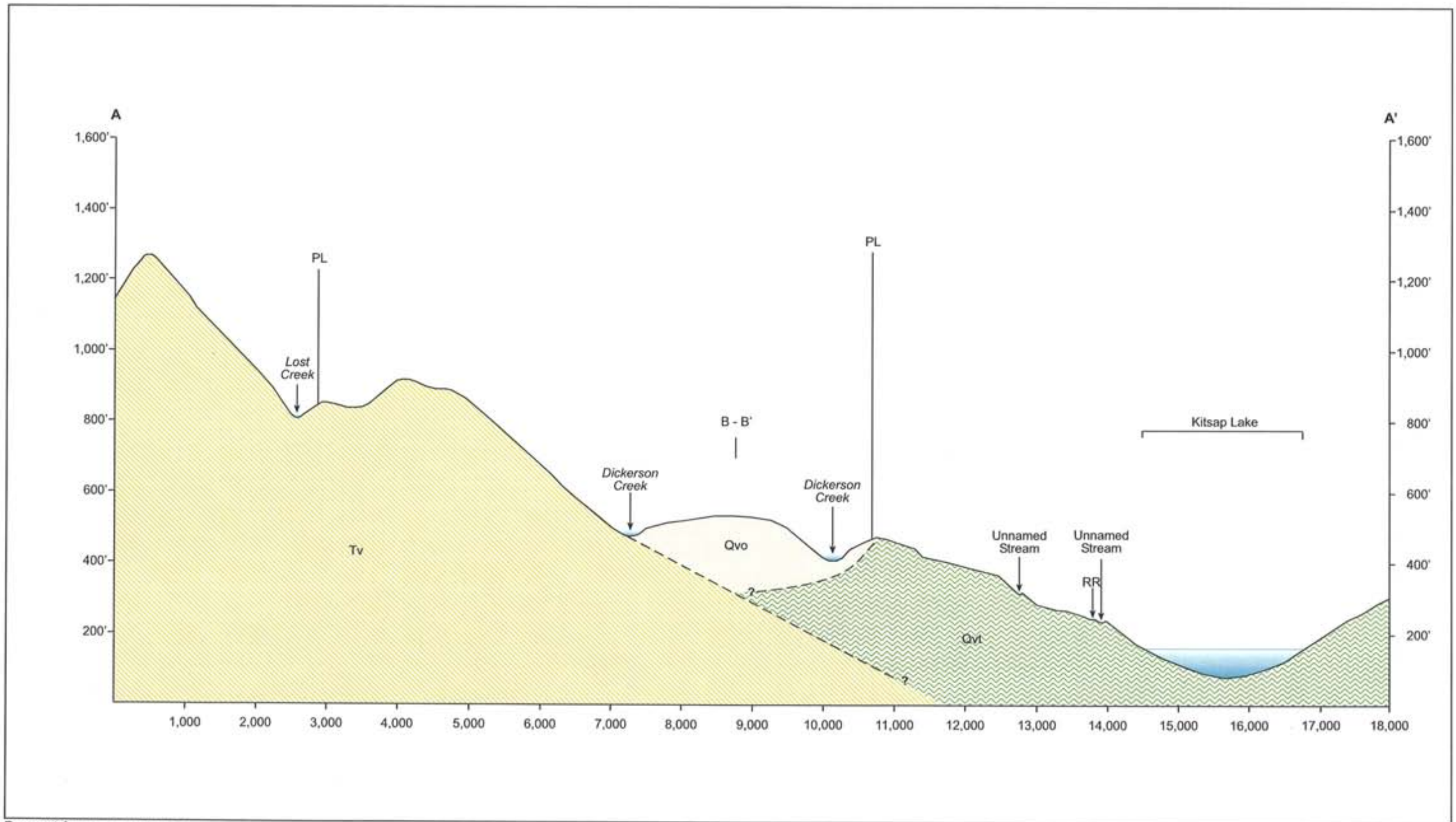







Parametrix Source: Kitsap County and Port Blakely GIS



Map 5
Ueland Tree Farm
Geologic Cross Sections

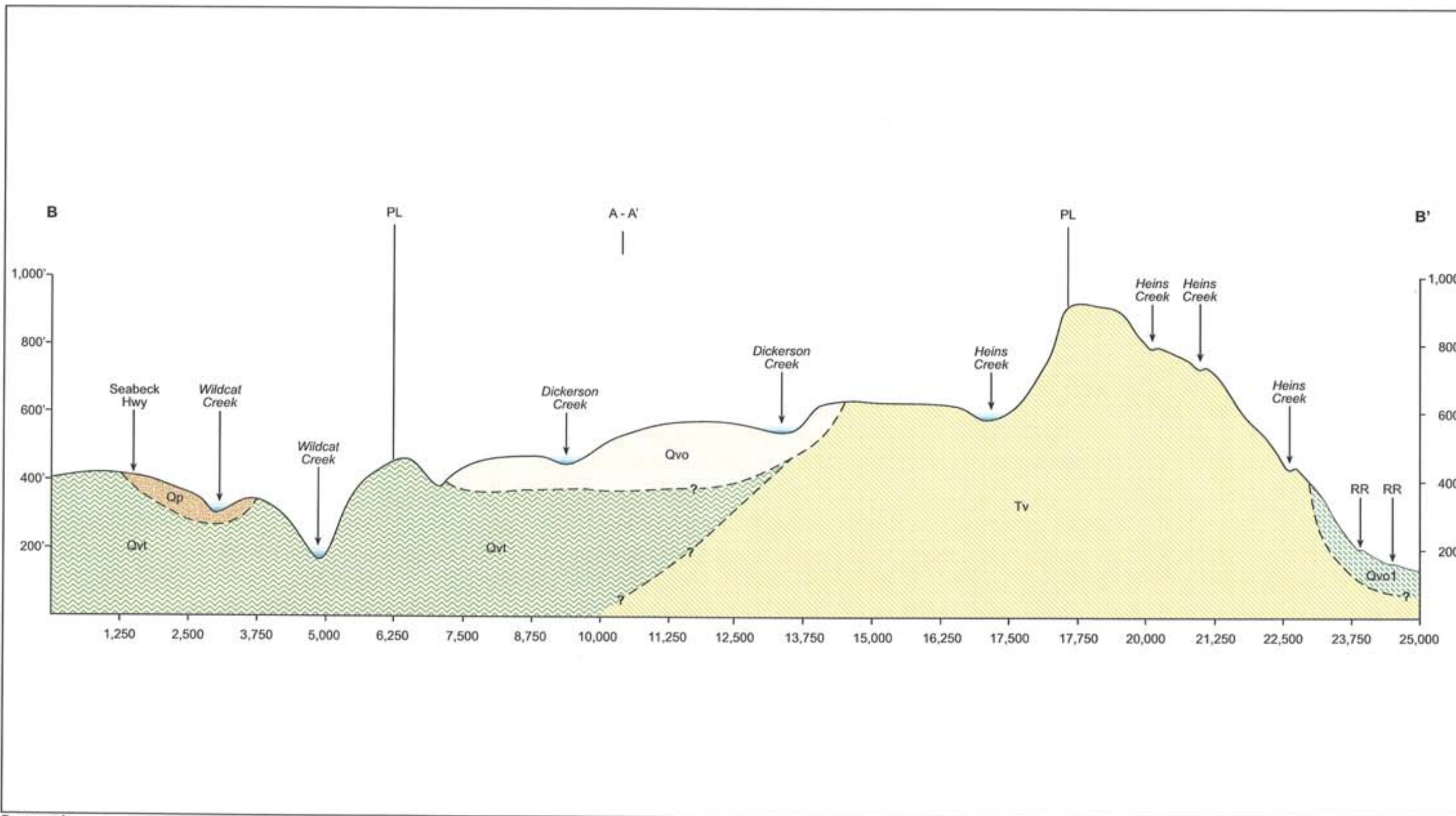


Parametrix 233-5528-001/01A(05) 2/07 (B)

-  Qvt - Till
-  Qvo - Recessional Outwash
-  Tv - Volcanic Rocks
- PL - Property Line
- RR - Railroad Tracks

Approximate Horizontal Scale 1" = 1,300'
 Approximate Vertical Scale 1" = 260'

Map 6
Cross Section A-A'

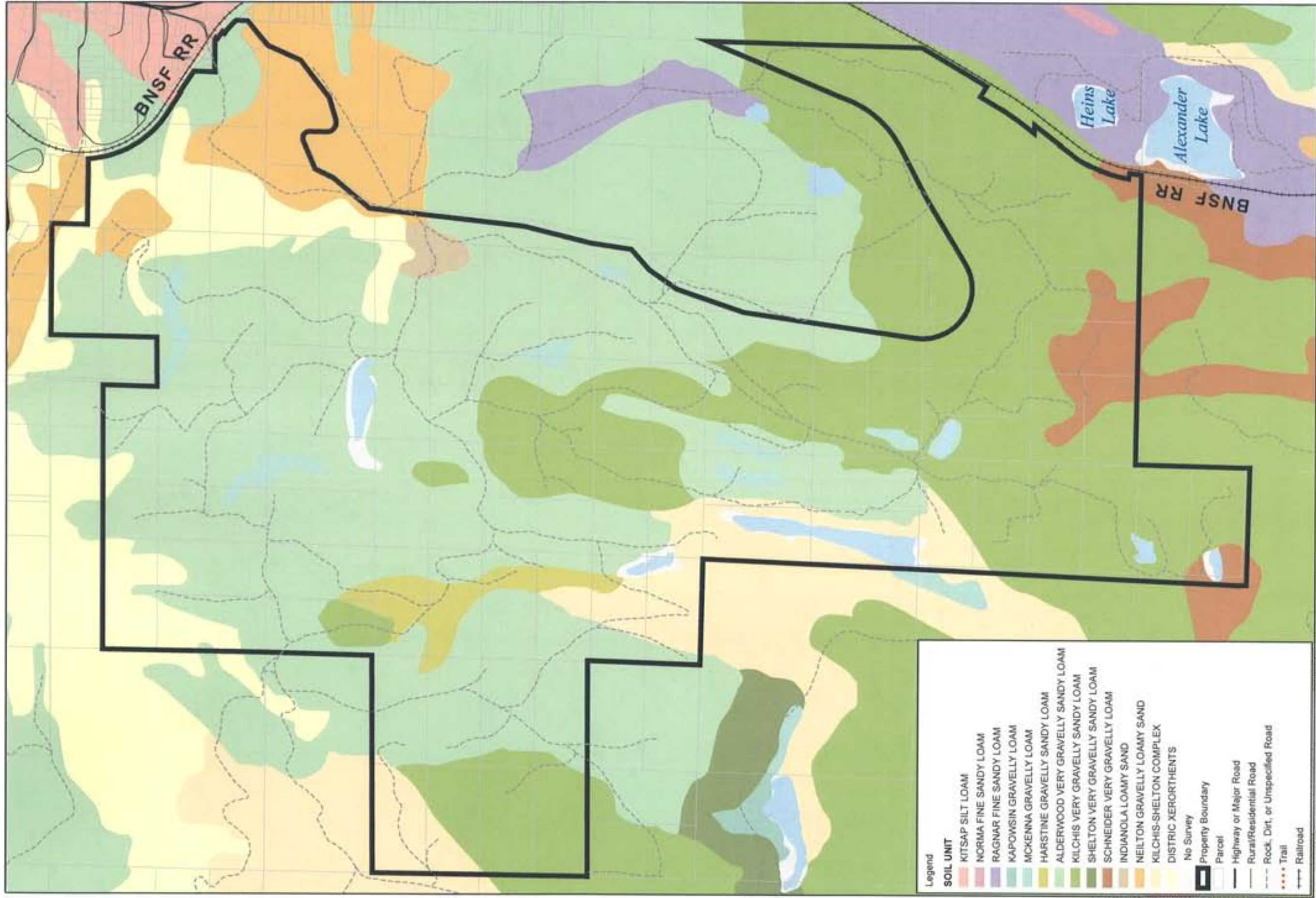


Parametrix 233-5526-001/01A/05/ 2/07 (B)

-  Qvt - Till
-  Qvo - Recessional Outwash
-  Qp - Puyallup Sand
-  Qvo1 - Gorst Creek Outwash
-  Tv - Volcanic Rocks
- PL - Property Line
- RR - Railroad Tracks

Approximate Horizontal Scale 1" = 1,700'
 Approximate Vertical Scale 1" = 270'

Map 7
Cross Section B-B'



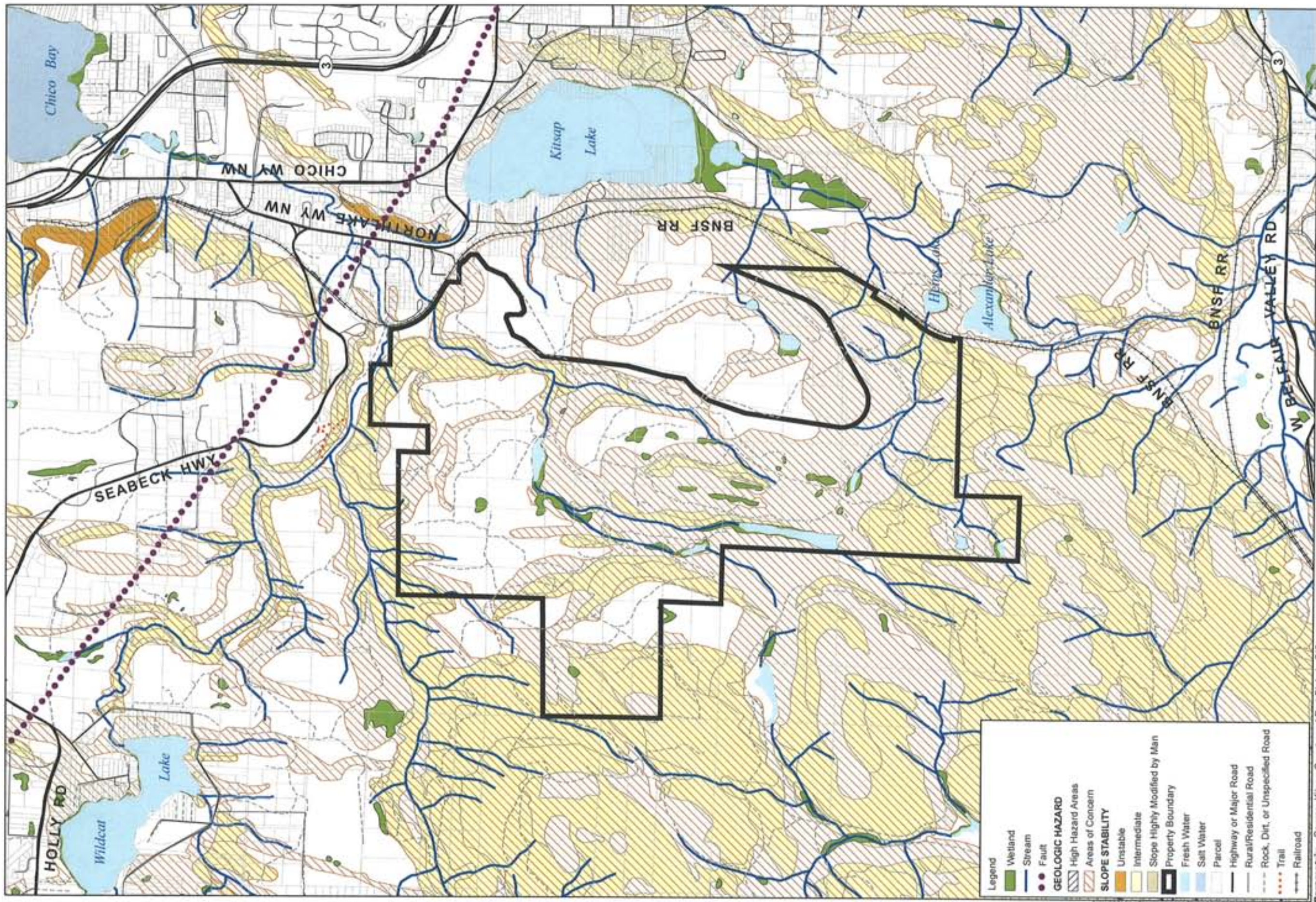
Legend

SOIL UNIT	Symbol/Color
KITSAP SILT LOAM	Light Red
NORMA FINE SANDY LOAM	Light Purple
RAGNAR FINE SANDY LOAM	Light Blue
KAPOWSIN GRAVELLY LOAM	Light Green
MCKENNA GRAVELLY LOAM	Light Yellow
HARSTINE GRAVELLY SANDY LOAM	Light Orange
ALDERWOOD VERY GRAVELLY SANDY LOAM	Light Green
KILCHIS VERY GRAVELLY SANDY LOAM	Light Green
SHELTON VERY GRAVELLY SANDY LOAM	Light Green
SCHNEIDER VERY GRAVELLY LOAM	Light Green
INDIANOLA LOAMY SAND	Light Green
NEILTON GRAVELLY LOAMY SAND	Light Green
KILCHIS-SHELTON COMPLEX	Light Green
DISTRIC XERORTHENTS	Light Green
No Survey	White
Property Boundary	Thick Black Line
Parcel	Thin Black Line
Highway or Major Road	Double Line
Rural/Residential Road	Single Line
Rock, Dirt, or Unspecified Road	Dashed Line
Trail	Dotted Line
Railroad	Line with Cross-ticks

Parametrix Source: Kitsap County and Port Blakely GIS



Map 8
Ueland Tree Farm
Soils Map

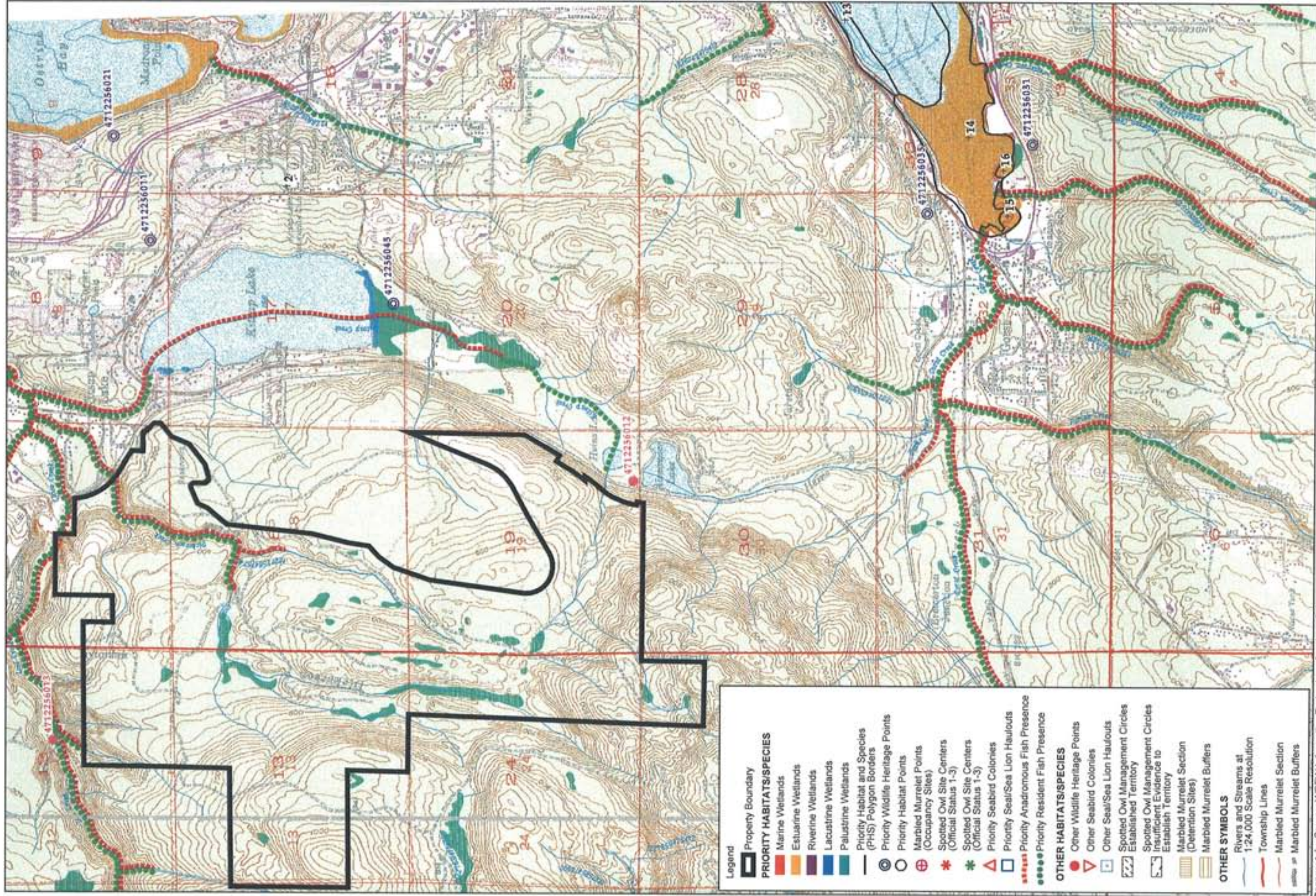


Parametrix Source: Kitsap County and Port Blakely GIS



Note: Critical areas locations are preliminary and have not been field verified.

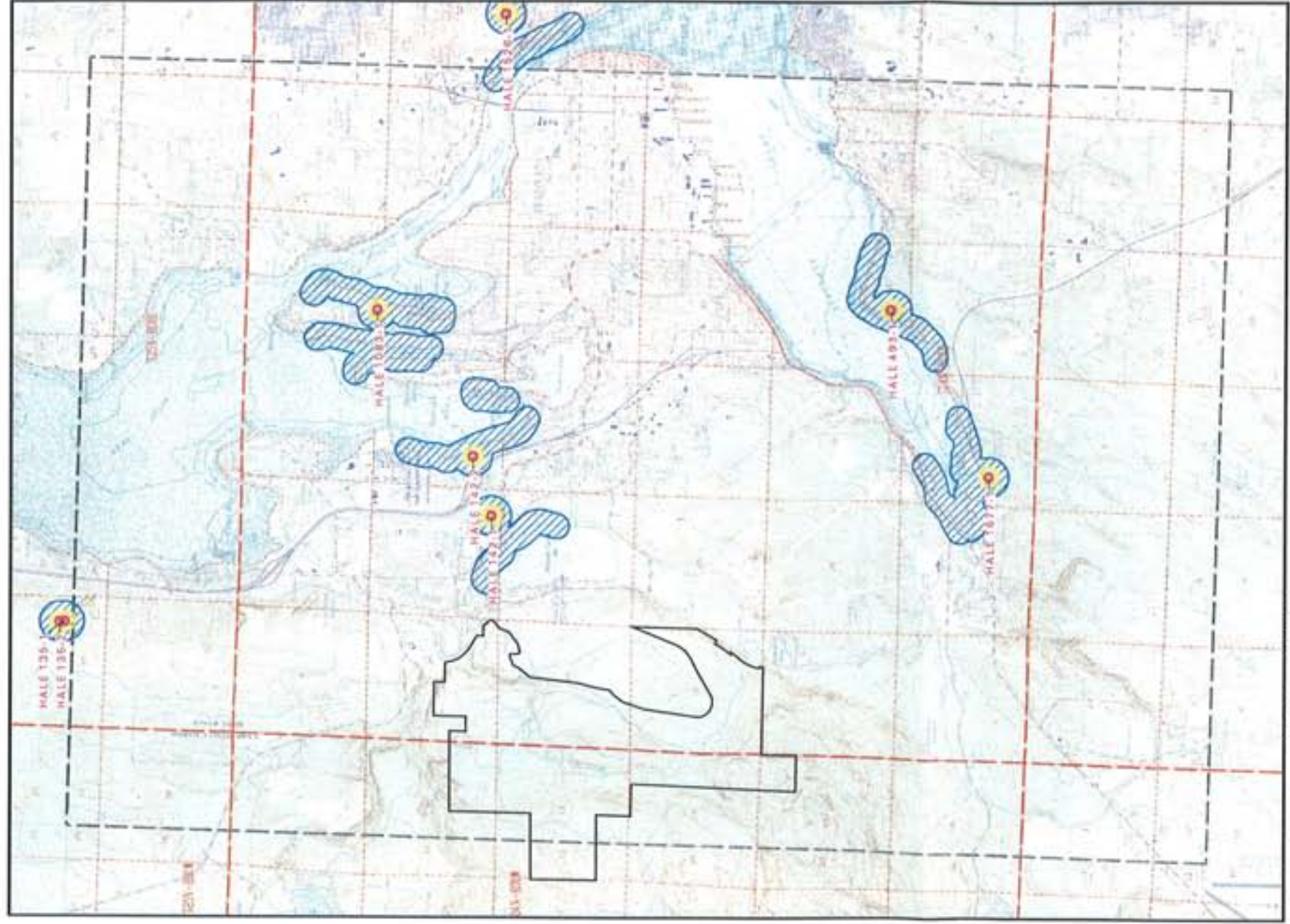
Map 9
Ueland Tree Farm
Critical Areas Map



Parametrix Source: WOFW Information Technology Services GIS



Map 10
Ueland Tree Farm
Habitat and Species Map



Washington Department of Fish and Wildlife
**BALD EAGLE
 BUFFER MANAGEMENT ZONE MAP**
 FOR QUAD NAME: BREMERTON WEST (4712256)

Map Scale - 1:54,500
 Coordinate System - State Plane South Zone 5626 (NAD83)
 Production Date - September 15, 2005
 Map Designed by WDFW Information Technology Services GIS

PLEASE NOTE
 All fish and wildlife species are vulnerable to harm from human activities. By releasing bald eagle information from the Washington Department (WDFW), the local investigation is not in any way intended to cause undue harm to our public fish and wildlife resources.

DISCLAIMER
 This map only includes information that WDFW maintains in a computer database. It is not an attempt to provide you with an official agency response as to the impacts of your project on bald eagle habitat. This information only documents the location of nest sites, rookeries, and riparian habitat. The impact of your fish and wildlife resources may differ from what is shown on this map. WDFW does not warrant that the information is accurate or that it will be updated. Site specific surveys are frequently necessary to evaluate the presence of priority resources.

USING THIS MAP
 Locations of mapped wildlife resources and habitat features are shown with a symbol and a buffer zone. The symbols are shown on the map. Locations of fish and wildlife resources are subject to seasonal changes. Discontinuities, changes in species and weather, and other factors may affect the accuracy of the map. Maps are not for navigation and are not intended to be used for future projects.

FOR MORE INFORMATION
 To learn more about the use of this information, users are encouraged to contact WDFW biologists.

MAP DATA SOURCES
 Bald Eagle Data: Wildlife Information Systems Project database from the Washington Department of Fish and Wildlife.
 Township/Section Data: Washington Department of Natural Resources Fish-Habitat Inventory Data; US Geological Survey.

MAP LEGEND

- Bald Eagle Information:**
- Nest Site (Species Code/Occurrence/Sequence)
 - Command Roost Site (Species Code/Occurrence/Sequence)
 - Command Roost Area
 - 400 Foot Nest Buffer
 - 800 Foot and Shoreline Nest Buffer
 - 1,200 Foot Command Roost Buffer
- Other Symbols:**
- Township Lines
 - Section Lines
 - Quadrangle Border

This map is intended to help you determine if a Bald Eagle Management Plan (BEM) is needed for your project. A BEM is a habitat protection agreement between Washington Department of Fish and Wildlife (WDFW) and a landowner resulting in minimal impact on bald eagles and reasonable land use for the owner. For more information on bald eagle management contacts and a fact sheet that addresses frequently asked questions visit the following WDFW web site: wdfw.wa.gov/wildiversity/soc/baldeagle/eagle_management.htm



Map 11
 Ueland Tree Farm
 Bald Eagle Buffer
 Management Zone Map